

A white Moody DS62 sailboat is shown from a side-rear perspective, sailing on the ocean. The boat's sails are fully deployed and appear to be made of a light-colored, possibly white or light blue, material. The boat is moving through the water, creating a white wake. The sky is a clear, pale blue. In the bottom right corner, there is a dark grey rectangular box containing the text 'DS62' in white. In the bottom center, there is the Moody logo, which consists of a stylized white wave icon followed by the word 'Moody' in a white serif font with a registered trademark symbol.

DS62

 Moody®



living on one level  
& luxurious comfort



easy handling &  
perfect control



safety &  
seaworthiness



handcrafted quality  
& high-tech



The Moody Deck Saloon 'one level living' concept takes a unique approach to modern yacht design. Simply open the sliding doors and you'll enjoy a panoramic view from the living area and the spacious cockpit on the same level. The combination of the large cockpit (with a cockpit table as standard) and open deck aft is ideal for spending time with family and friends. Welcome aboard.



living on one level  
& luxurious comfort

living on one level  
& luxurious comfort



Traditional teak deck

Sea view saloon



Helm'sman's position on both sides



Traditional teak deck



Enjoy the large cockpit



Owners' cabin in the bow section



Luxury owners' head



Retractable TV



Large galley

living on one level  
& luxurious comfort



The Moody DS62 is designed to make sailing a pleasure. The self-tacking-jib ensures easy and safe handling for a small crew, supported by powerful winches. The yacht can be simply manoeuvred from the helm station, with all sails easily adjustable from the helmsman's position.



easy handling  
& perfect control

easy handling  
& perfect control







The Moody DS62 is exceptionally safe thanks to the continuous bulwark and a guardrail which offers all-round security. Protected by a sliding bimini, the large cockpit serves as a busy social area in all types of weather. And with the swimming platform open, access to the sea is just two steps away.



safety &  
seaworthiness



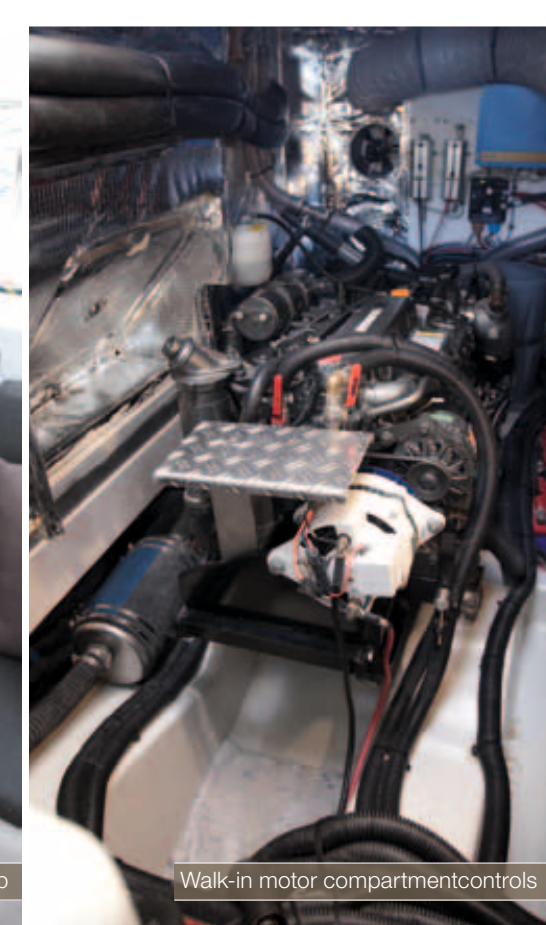
Walkaround deck



Electronic double furlers



Workshop



Walk-in motor compartment controls

600l diesel

800l water

The Moody DS62 is a true ocean cruising yacht. Her design incorporates a high degree of seaworthiness and independence. Highlights include exceptional refrigeration, water and diesel capacities, a walk-in motor compartment and workshop, a solid watertight bulkhead in the bow and much more besides.

safety & seaworthiness



Solid bulwark with guardrail



Strong security glass



Hydraulic bathing platform



Safe helmsman's seats



As you'd expect, the navigation equipment, autopilot and engine can be efficiently controlled from inside the deckhouse. Strong handles make it easy for you to move around the interior in bad weather. Take your seat in the navigator's area, with ample space for extensive passage planning, and enjoy 360-degree views to the horizon.

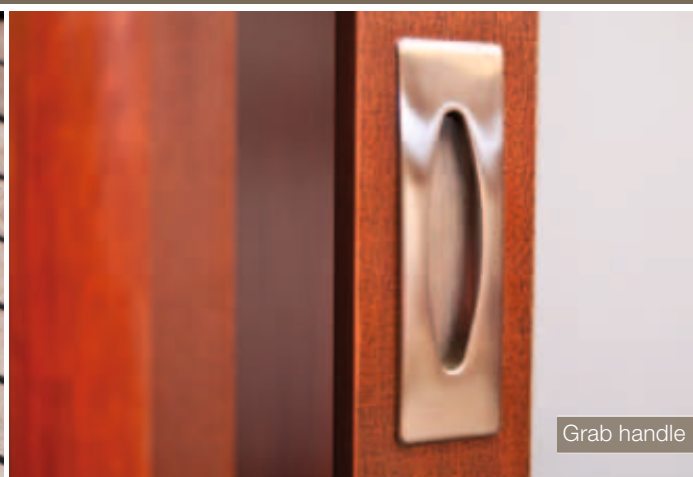


handcrafted quality  
& high-tech

handcrafted quality  
& high-tech



Classically arranged teak



Grab handle

Experience a fine and perfect interior with solid woods plus a classic teak deck where handcrafted solidity meets modern design. The Moody DS62 benefits from an extra-safe construction with strong bulkheads sturdily connected with hand-laid laminates to the hull and deck.

tradition meets  
modernity



Designer bathroom



Saloon table with rails



Saloon lighting

Maritime requirements such as the solid and spacious navstation with its electronic displays and a table with wooden rails are in perfect harmony with the carefully designed lighting gear in the saloon.

electronics  
meet design



Navstation

## material exterior

The hull and waterline can be painted in almost every colour according to the Alexseal Yacht Coating Selection. Please ask your dealer.

Cloud White

Whisper Gray

Dark Gray

Sunfast Red

Ethereal Blue

Flag Blue

Stars & Stripes Blue

Jade Mist Green

Sable Brown

Moon Dust

Eggshell White

option cockpit upholstery

option maindrop, bimini, sprayhood & canopy

Natte Beige

Natte Taupe

Natte Red

Natte Dark Blue

Natte Dark Grey

Natte Light Grey

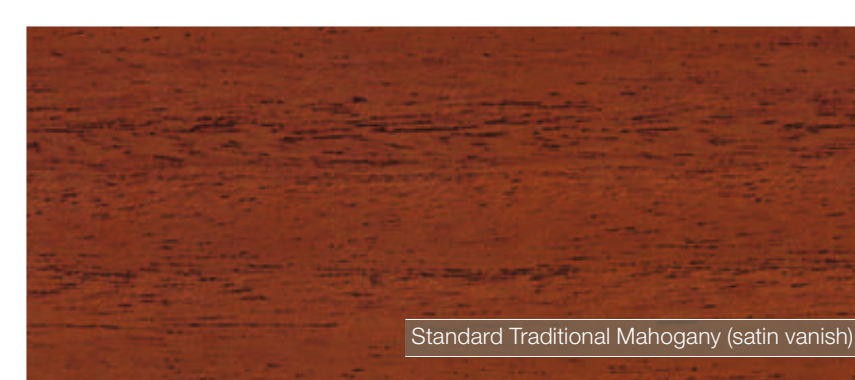
Cream

Dark Blue

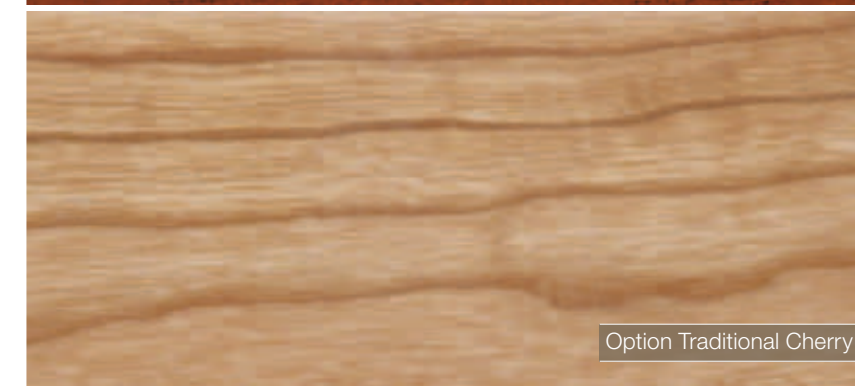
Light Grey

Dark Grey

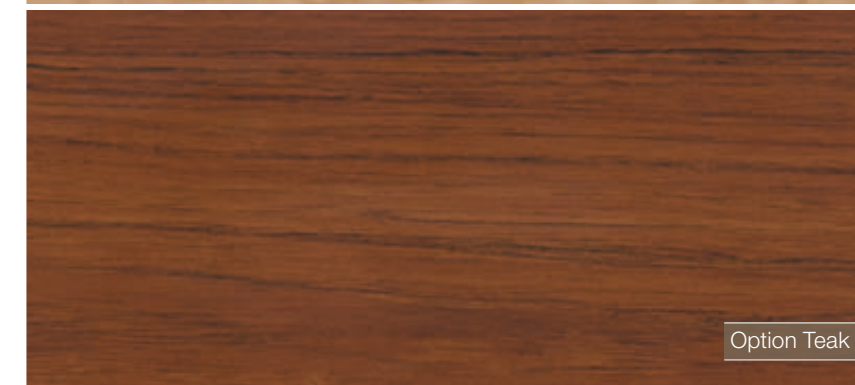
colours & materials  
make it yours



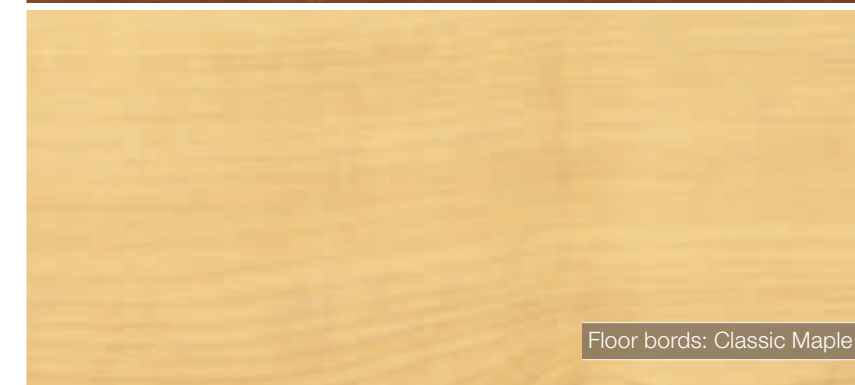
Standard Traditional Mahogany (satin varnish)



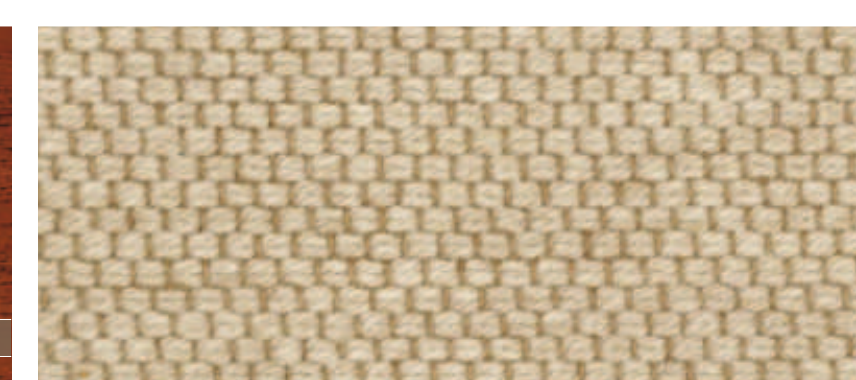
Option Traditional Cherry



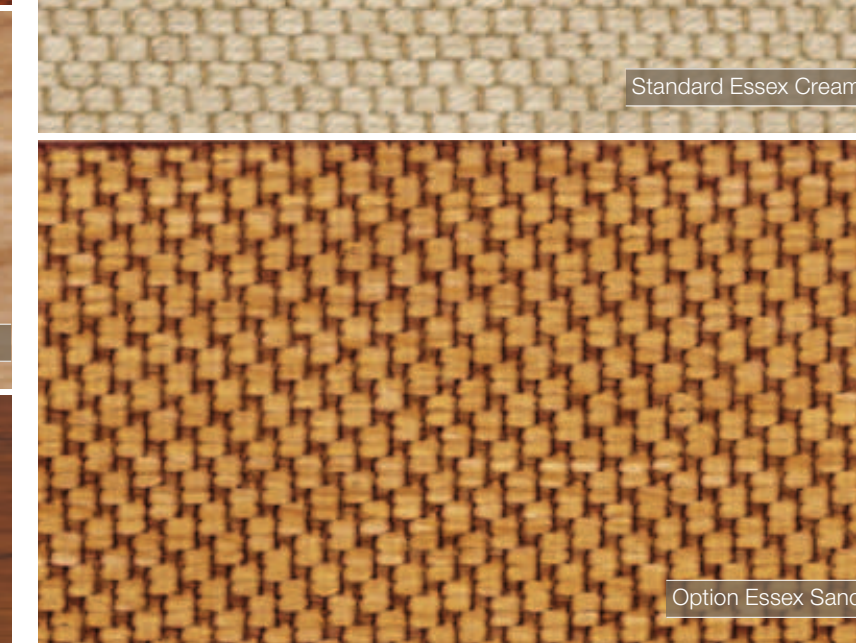
Option Teak



Floor bords: Classic Maple



Standard Essex Cream



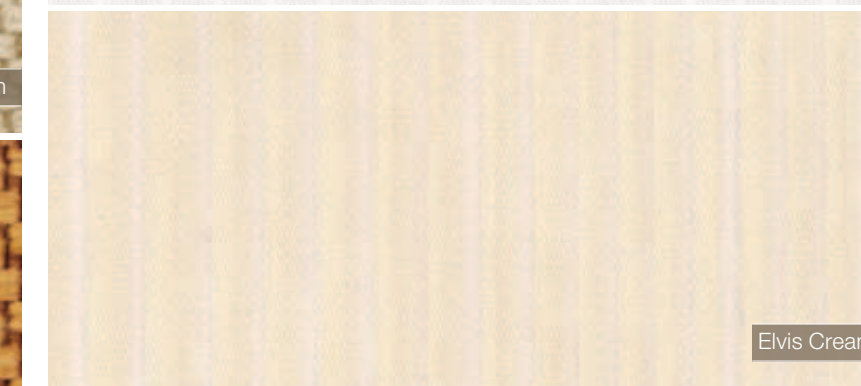
Option Essex Sand



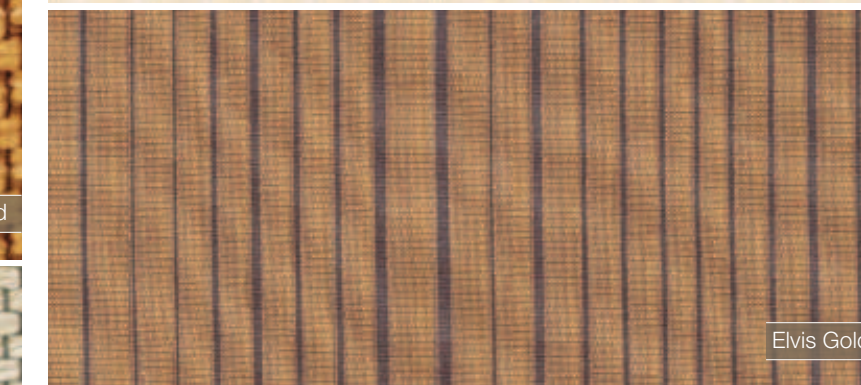
Option Essex Beige



Elvis White



Elvis Cream



Elvis Gold



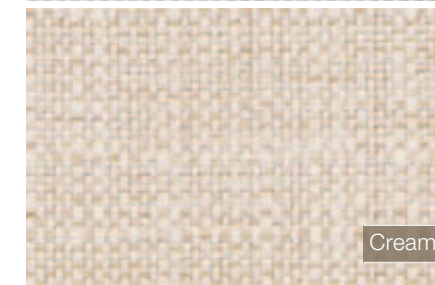
Elvis Red



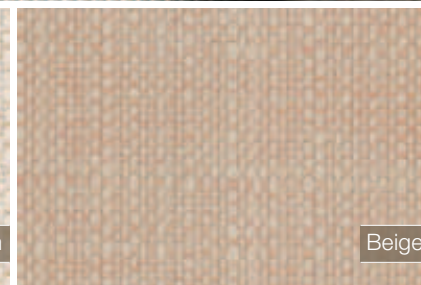
standard kent



option devon



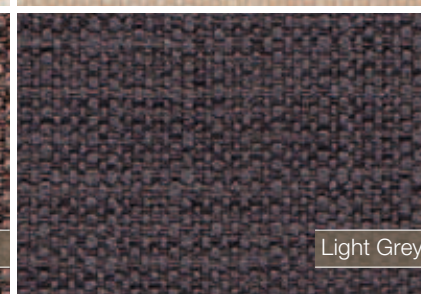
Cream



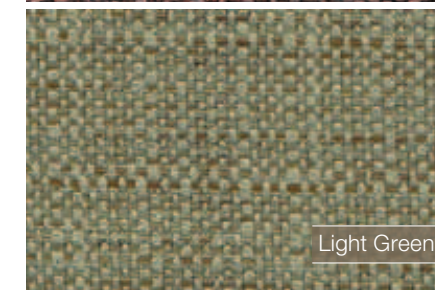
Beige



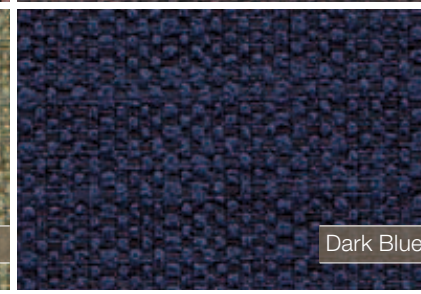
Brown



Light Grey



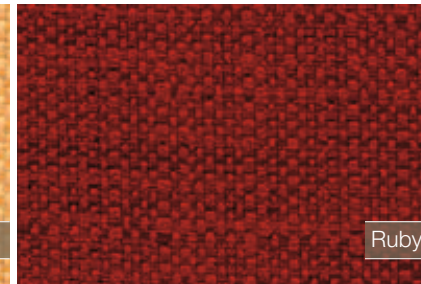
Light Green



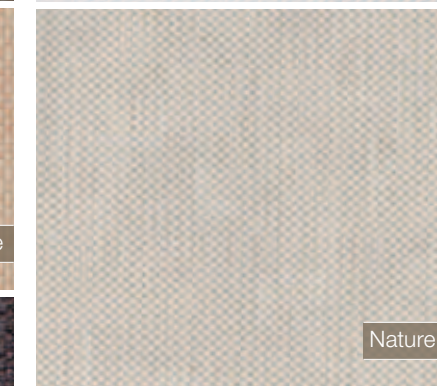
Dark Blue



Gold



Ruby



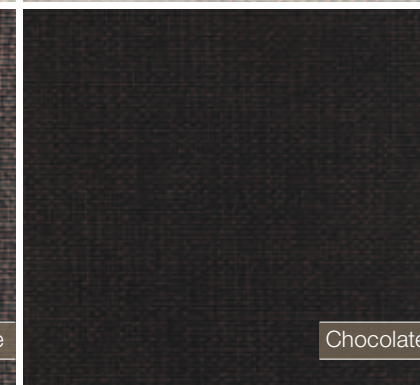
Nature



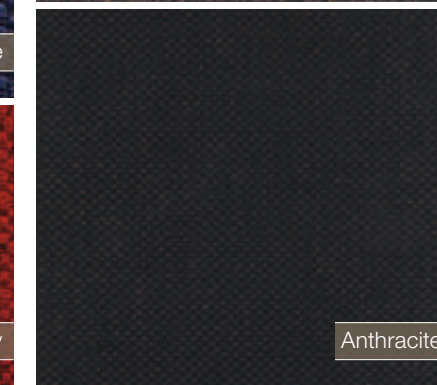
Beige-Malange



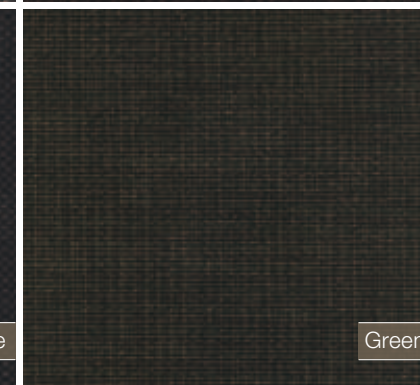
Brown-Melange



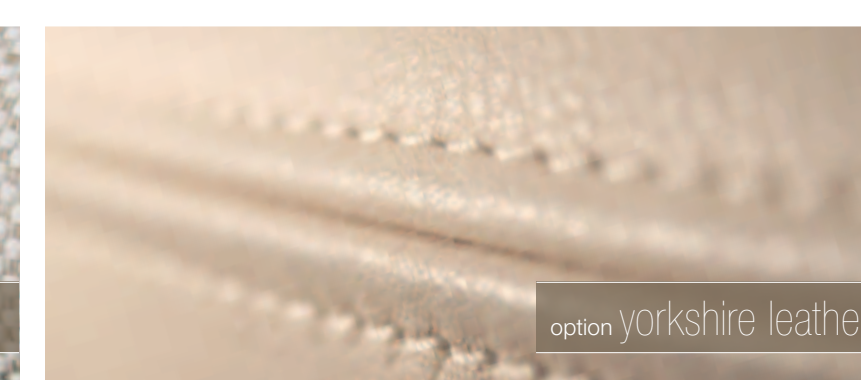
Chocolate



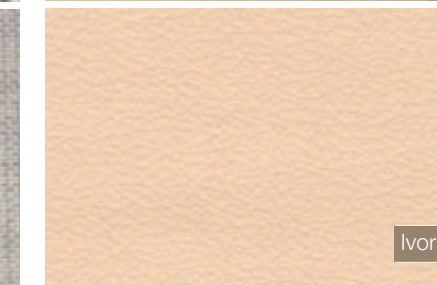
Anthracite



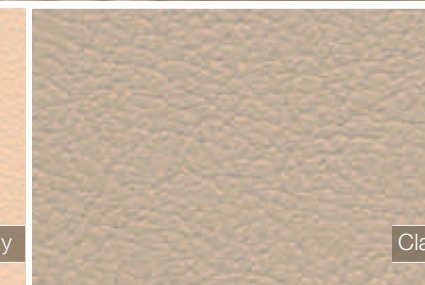
Green



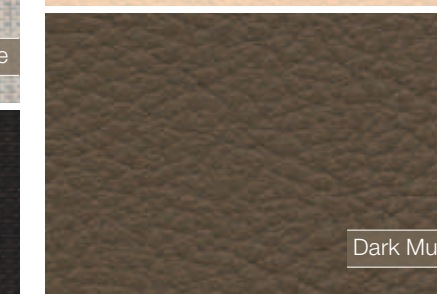
option yorkshire leather



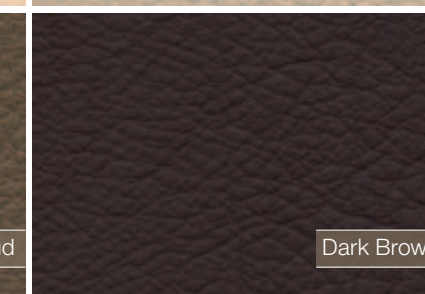
Ivory



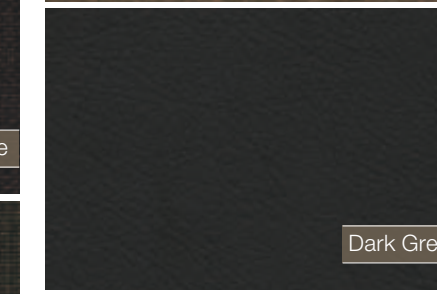
Clay



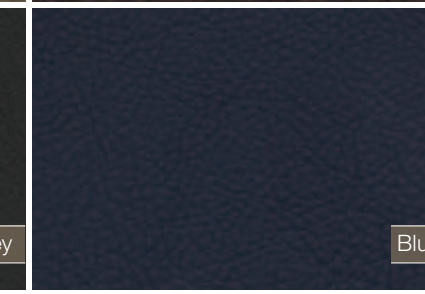
Dark Mud



Dark Brown



Dark Grey



Blue



Gold



Red

interior wood

floor carpet

option curtains

saloon, sofa & navigators seat



TV flat screen (saloon), TV lifting system (saloon), All-in-one-antenna in mast top (VHF, FM Radio, TV-analog & DVBT), TV preparation saloon

TV package saloon



FUSION MS-AV700 multimedia radio, CD/DVD player, VHF, AUX, USB, LCD colour display, four individual audio zones configurable



FUSION MS-DKIPUSB docking station for iPod/iPhone, USB, Android



FUSION MS-NRX200 remote control in cockpit



2 BOSE 131 cockpit speakers white



4 High end 2-way speakers integrated in headliner



WLAN access point

entertainment package plus



navigation packages plus



4 SIMRAD IS40 multifunction displays, 2 at each helm position, incl. windtransducer



Autopilot, SIMRAD control unit & FluxGate Gyro Compass RC42



2 SIMRAD NSS12 touch screen chart plotter, one at each helm position



SIMRAD VHF RS25 at chart table incl. 2nd handset AHK05, wireless/remote



NMEA engine information interface for chart plotter

SIMRAD



4 B&G Triton multifunction displays, 2 at each helm position, incl. windtransducer



Autopilot, B&G control unit & FluxGate Gyro Compass RC42



2 B&G Zeus 12 chart plotter, one at each helm position



SIMRAD VHF RS25 at chart table incl. 2nd handset AHK05, wireless/remote



NMEA engine information interface for chart plotter

B&G

options  
it's your choice...



Double dish washer



Electrical toilet



Fairlead with jammer

...or just make a wish

The Moody DS62 offers you an unrivalled amount of options when it comes to equipment and materials. With so much choice available, you will be the proud owner of a genuine custom-series boat.



Specially designed laminate cruising sails



Washing machine



Electrical winches



Carbon steering wheel



Elegant furling boom



Carbon mastpod for displays



Helmsman's bimini



Carbon cupholder inlet

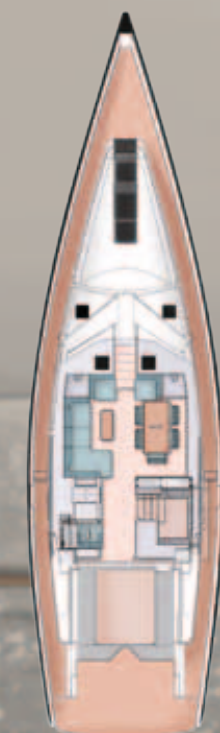




D1



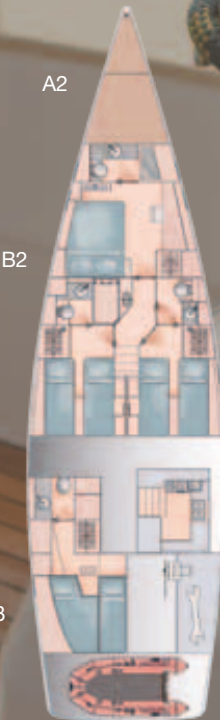
D2



A1



A3



A2



B1



B3



B2



C3



C1



C2



E3



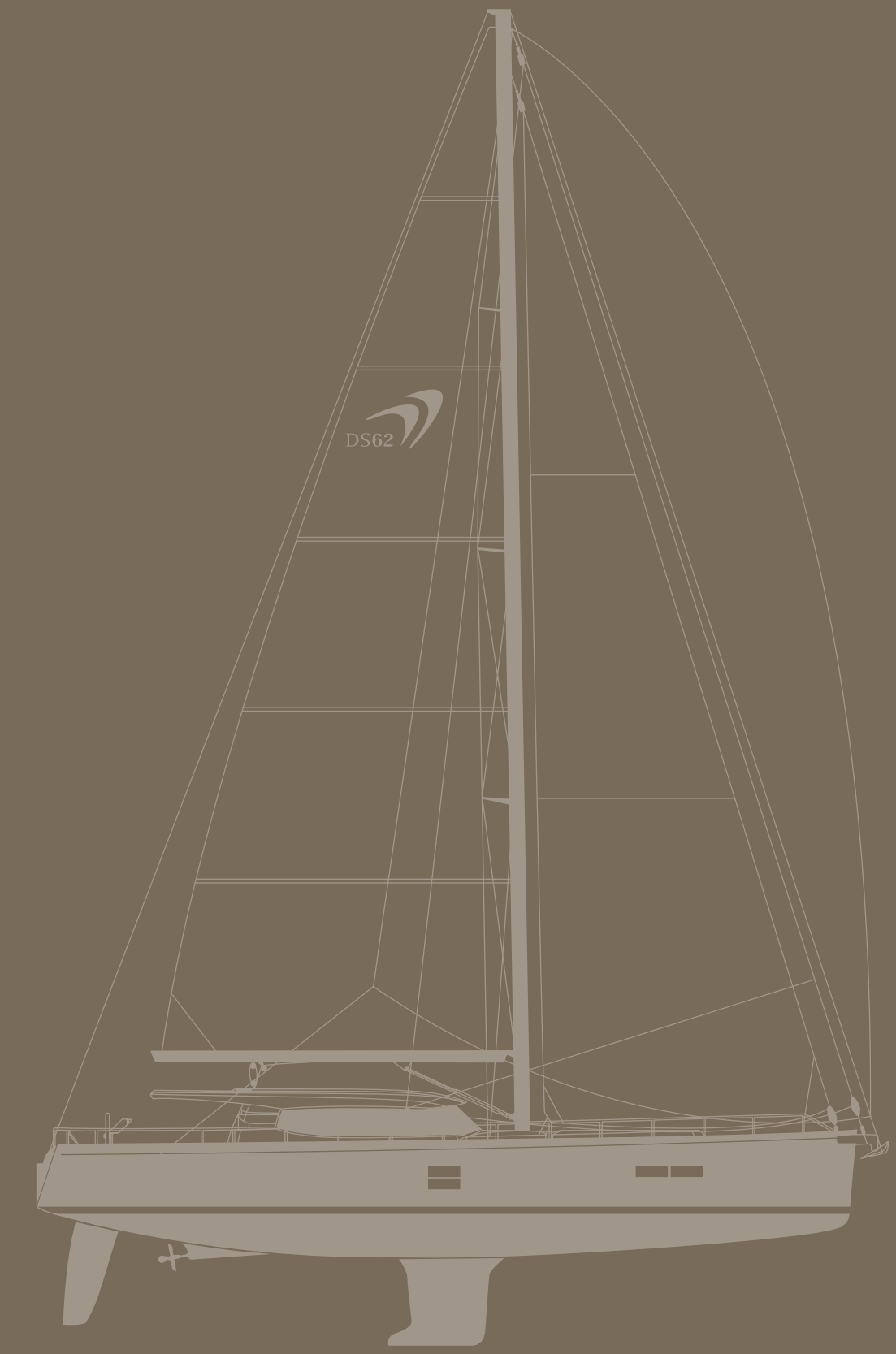
E1



E3

E2

All measurements and weights are approximate. Specifications, modifications and material can be changed without notice. Errors reserved.



# cabin concept & specifications

<b>LOA</b>	19.30 m   63'32"
<b>LWL</b>	17.20 m   56'43"
<b>Beam</b>	5.25 m   17'22"
<b>Draft</b>	2.95 m   9'7" (composite iron/lead keel) standard
<b>Cruising keel</b>	2.50 m   8'2" (composite iron/lead keel) option
<b>Displacement</b>	approx. 30 t   approx. 66,137 lb
<b>Ballast</b>	approx. 10 t   approx. 22,045 lb
<b>Engine</b>	Volvo 110 kW / 150 HP
<b>Fresh water</b>	approx. 725 l (passage tank can change to water)
<b>Fuel tank</b>	approx. 720 l (plus 300 liter passage tank) totalling 1,000 L
<b>CE Certificate</b>	A (ocean)
<b>Mast length above WL</b>	approx. 27.6 m
<b>Main</b>	approx. 109.3 m <sup>2</sup>   approx. 1,176.5 sq ft
<b>Jib</b>	approx. 80.7 m <sup>2</sup>   approx. 868.7 sq ft
<b>Total sail area</b>	approx. 190.0 m <sup>2</sup>   approx. 2,045.2 sq ft
<b>Rig</b>	I 25.00 m   80'1" J 7.00 m   22'9" P 23.20 m   76'1" E 8.50 m   27'9"
<b>Design</b>	Dixon Yacht Design   Watervision
<b>Interior</b>	Design Unlimited



Moody  
HanseYachts AG  
Salinenstraße 22  
D-17489 Greifswald  
[www.moodyboats.com](http://www.moodyboats.com)

 **Moody**<sup>®</sup>

reserved