



 NEW

675

preliminary

Luxury customized to the max

[www.hanseyachts.com](http://www.hanseyachts.com)





NEW

675

The true peace of god  
begins at any point  
1,000 miles from  
the nearest land.

Joseph Conrad, novelist, 1857 – 1924







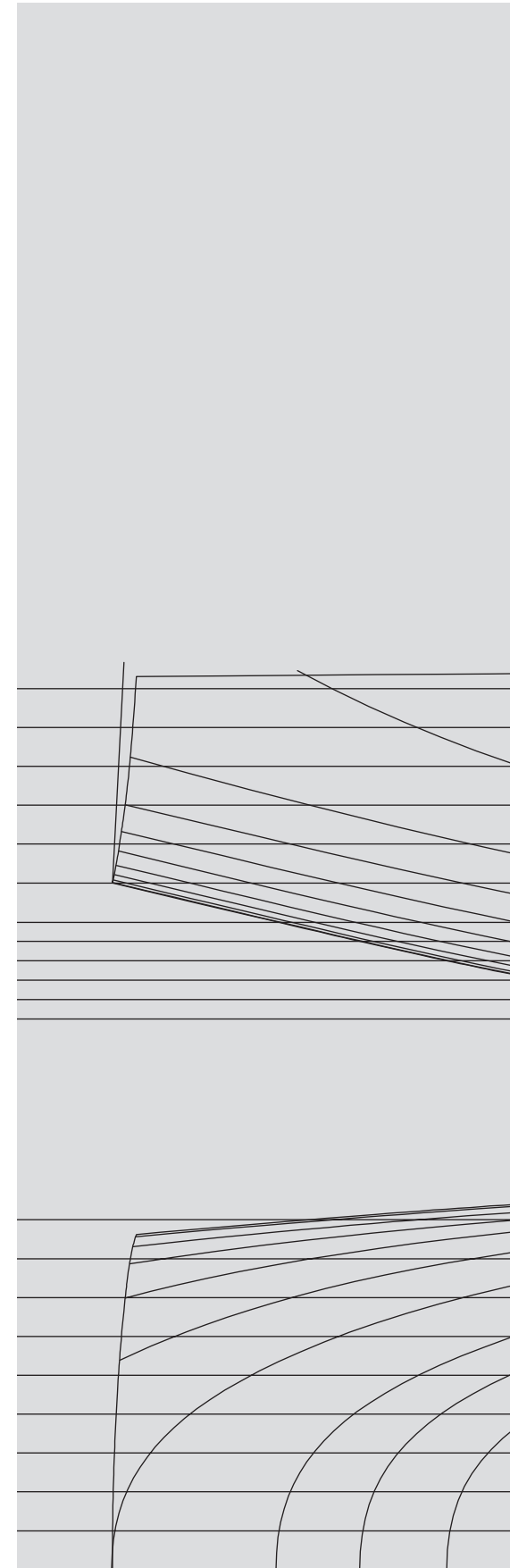


# FAST CRUISING



As one of the world's very few serial producers of 70 feet large sailing yachts, HANSE knows how to achieve velocity in this class – without compromising sailing properties and comfort in any way.

The new flagship of our fleet shows a trendsetting combination of enormous size and amazing performance. Use the opportunity to get onboard the future!

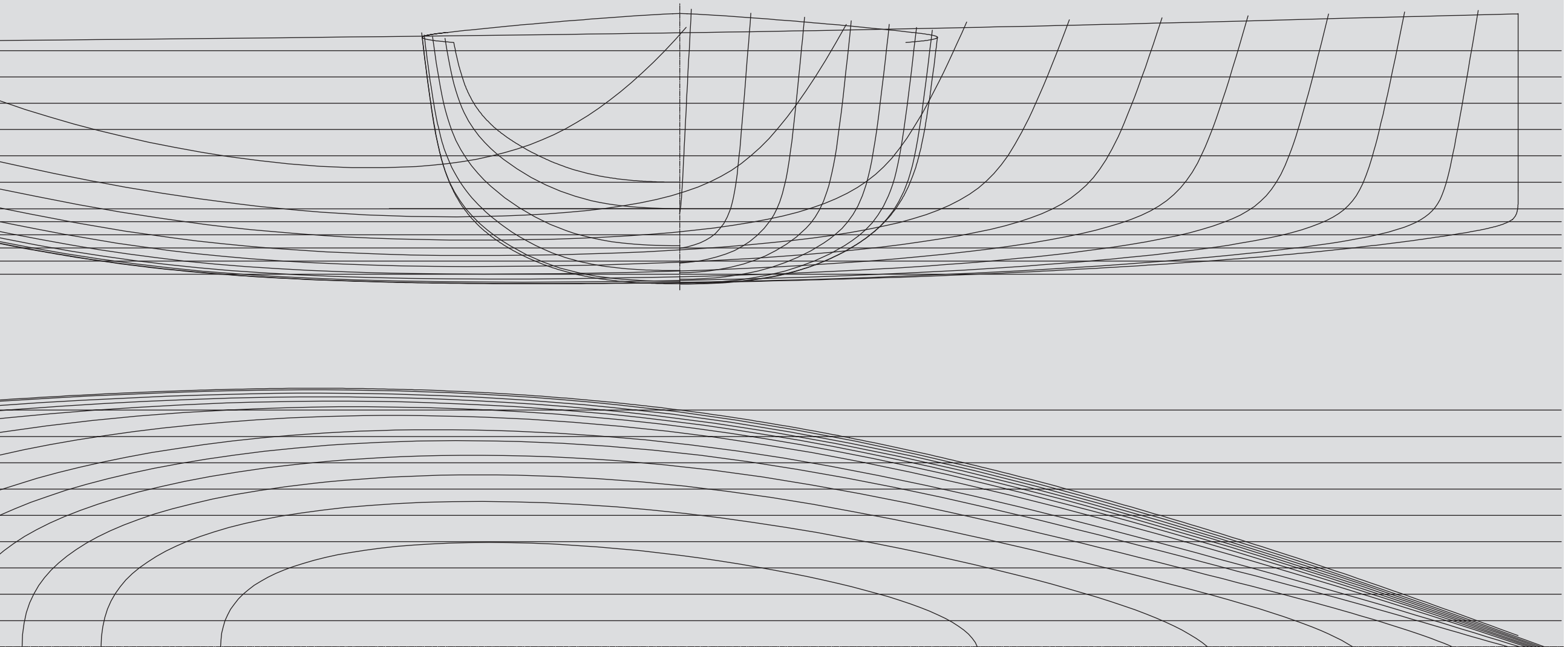




VPP sail performance at 16 kn true wind – jib and asym. spinnaker



Measuring the performance of the 675 with the velocity prediction program VPP produces stunning figures: This yacht sets benchmarks in transforming the energy of the wind into sailing speed with utmost efficiency.





 INNOVATIVE DESIGN

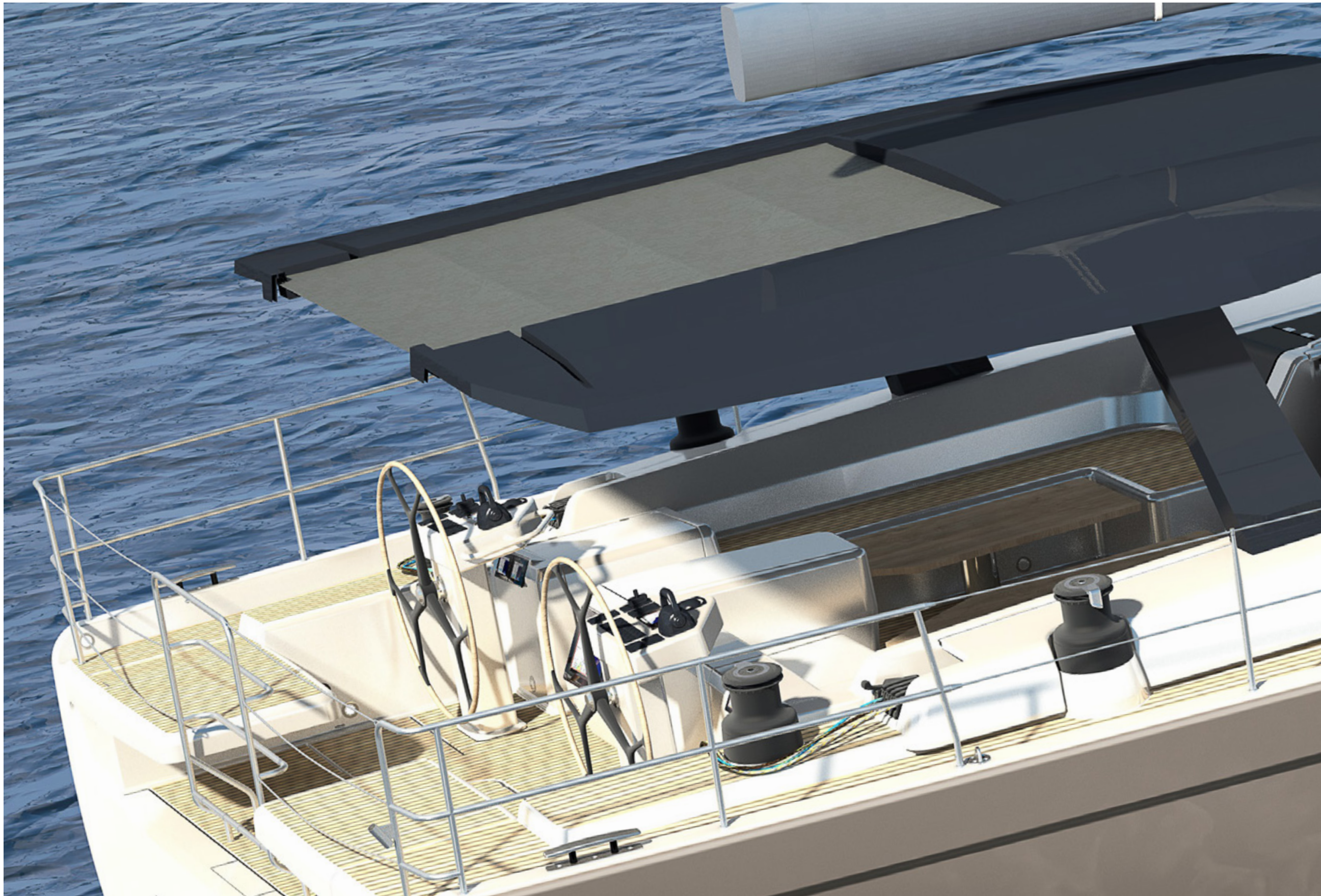




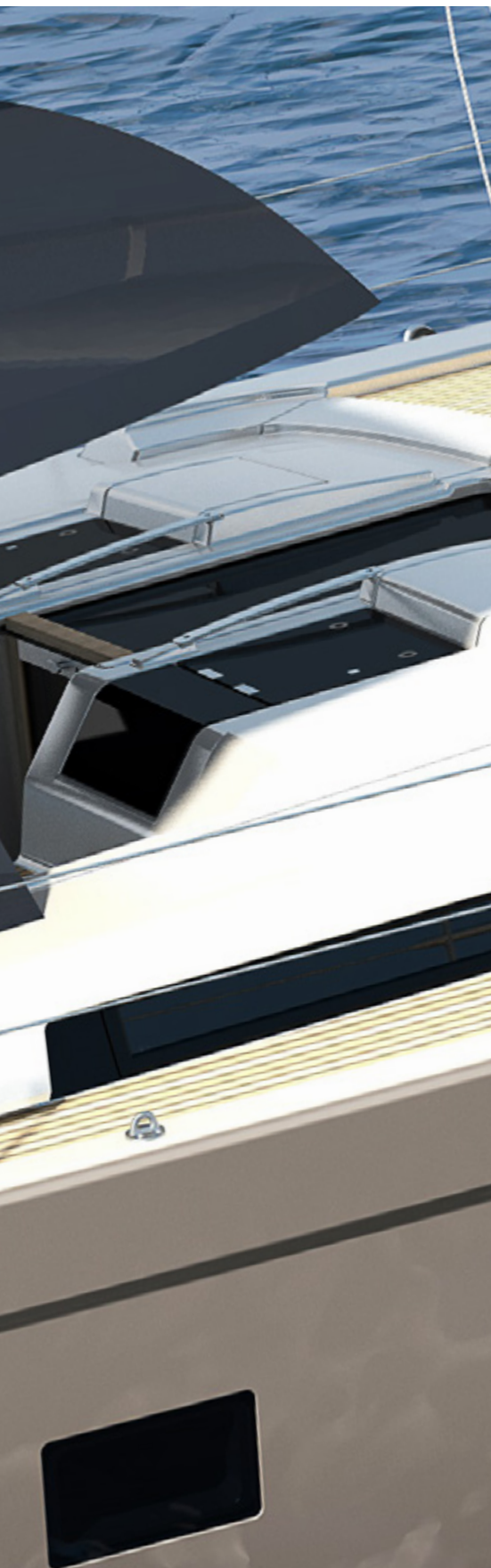


Sleek profile, undisturbed lines, upright stem:  
Using 21st-century form language, the 675 blends  
elegance and speediness in a most convincing way.









One of the most important goals in boat design is to provide sailors perfectly with light and shade on deck. Unsurprisingly, a large fixed hardtop is the most characteristic design feature of the 675. It continuously protects both helmstations from all weather exposures. The helmsman is still able to enjoy the sun whenever he likes by opening the built-in sliding bimini.

The large saloon roof is made of glass and can be fully opened for ventilation. At the front, its forward facing part is angled down to allow views ahead.



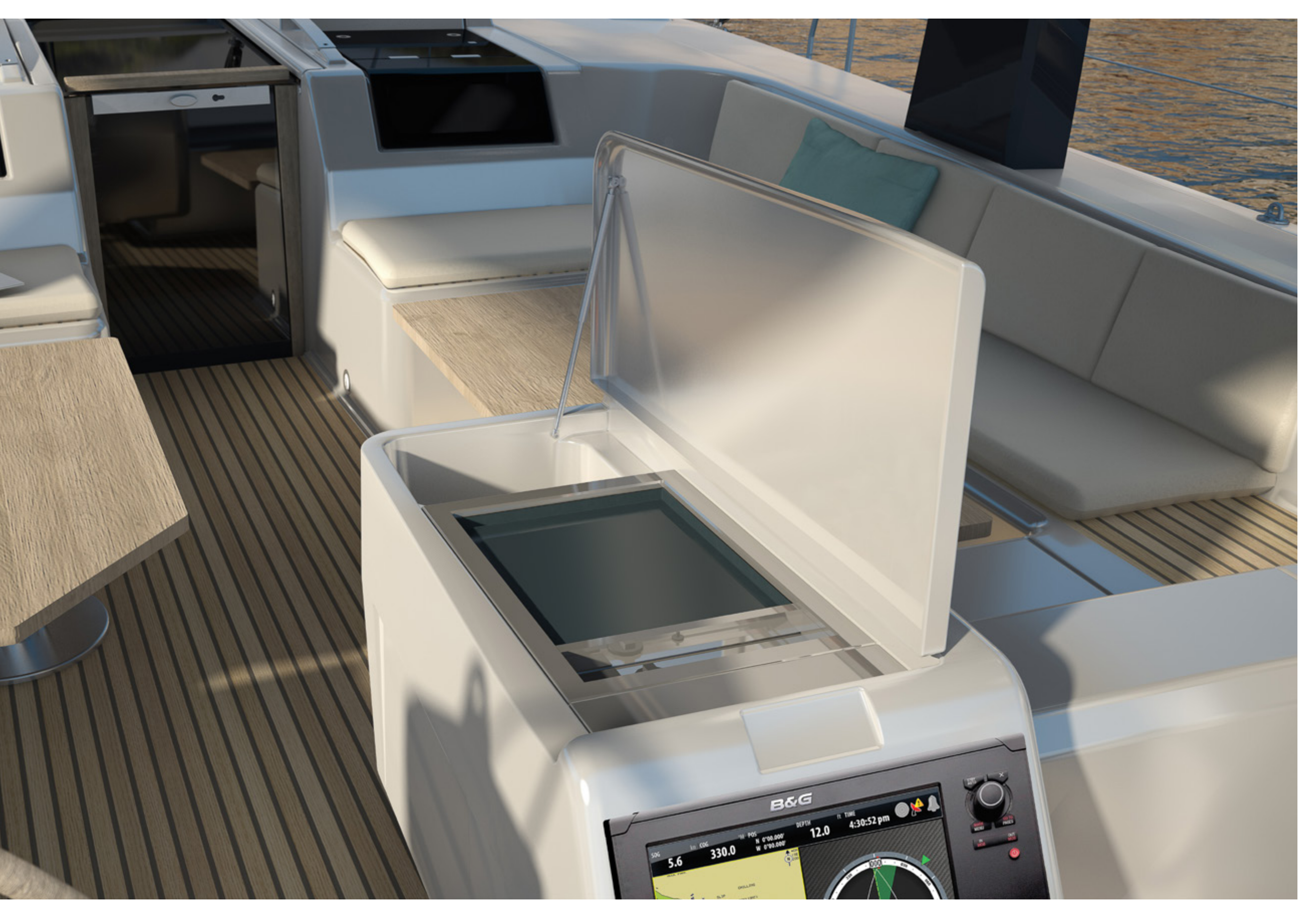


Sailing is all about relaxation, so we have kept a spacious area clear for those wanting to soak up the sun. On the foredeck, there is a comfortable living area that works equally mid-ocean as it does at anchor or in the marina.

The XXL-Sunpads are large enough to surround yourself with everything you like to have in reach. To make relaxation complete, grill and fridge can be installed in already provided spaces.







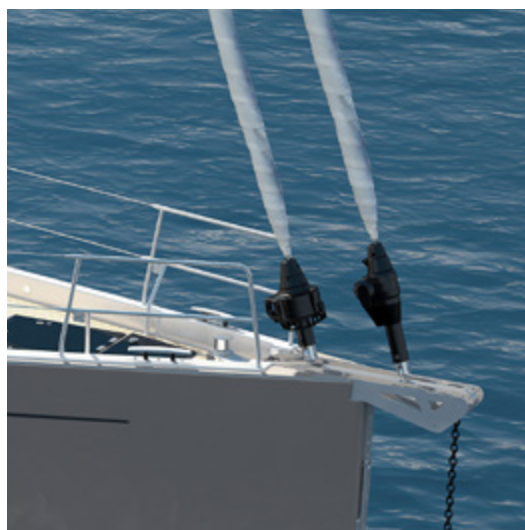


 EASY SAILING



NEW DIMENSION  
Greifswald





The world-renowned naval architects judel/ vrolijk & co combined their knowledge on racing with the demands of easy sailing in a perfect way. Featuring perfect ergonomic design, the twin wheel stations allow to steer the yacht with little effort.

With all the sails operable from the cockpit and the chart plotter right in front, the helmsman may be the one on board who enjoys the cruise most.



# INDIVIDUAL CUSTOMIZATION



The interior space of the 675 defines a new dimension in private sailing. Its extremely individual furnishing reflects the taste and the passion of its owner in a unique way.













Any room below deck breaks the traditional standards for yachts in this class and sets an exclamation mark behind the word „style“: Let your eyes wander over smooth rounded lines, sophisticated detailing, cutting-edge conveniences and high-class surfaces beautifully reflecting the daylight inside.

No question: This airy space is entirely made for everyone’s wellbeing.





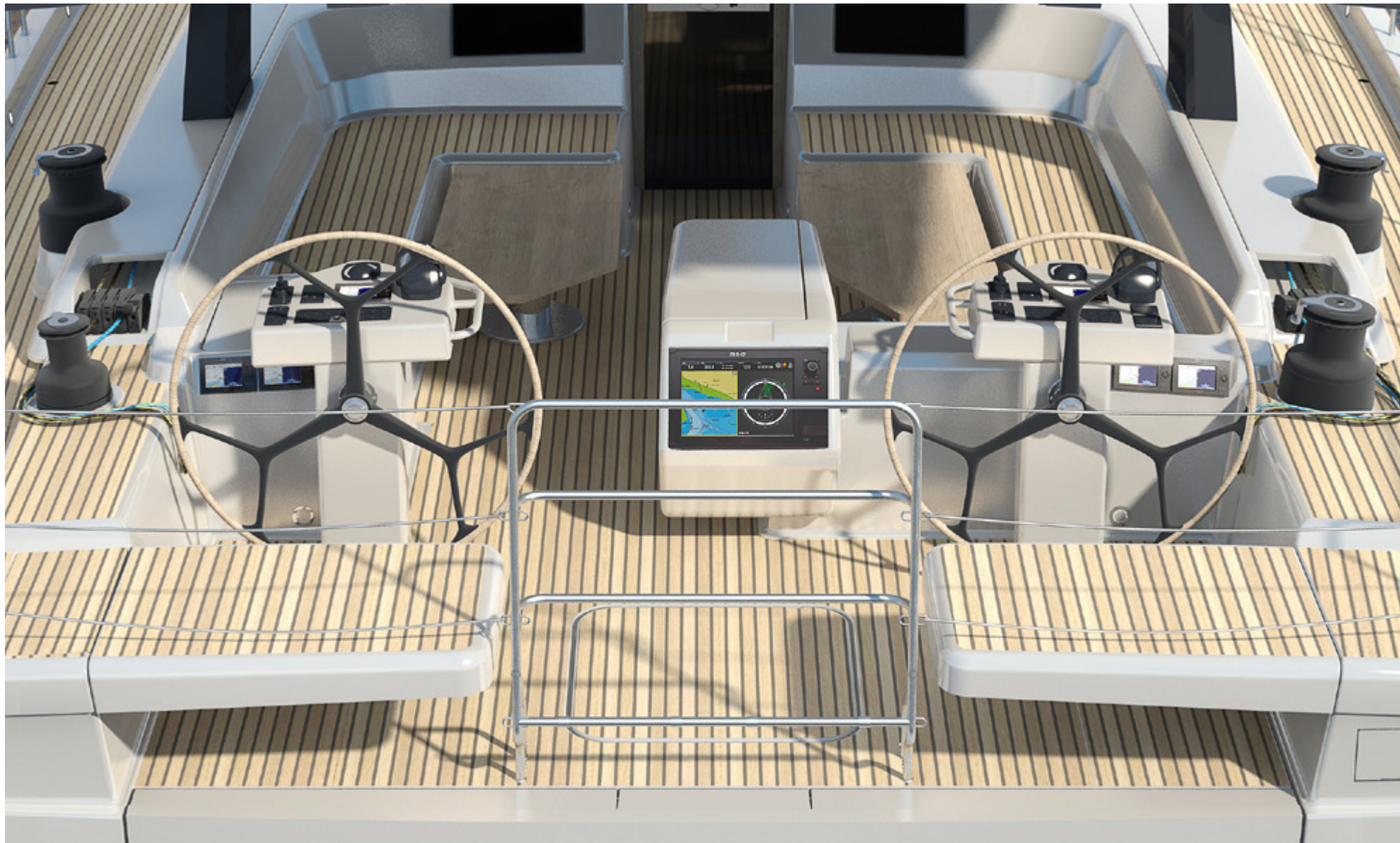




It's the owner's privilege to have the entire bow area all to himself. The master cabin invites you to indulge in total privacy any hour of the day. Enjoy being surrounded by a modern and exquisite taste.

Needless to mention the cabin offers generous en-suite facilities and another television just for the owner.





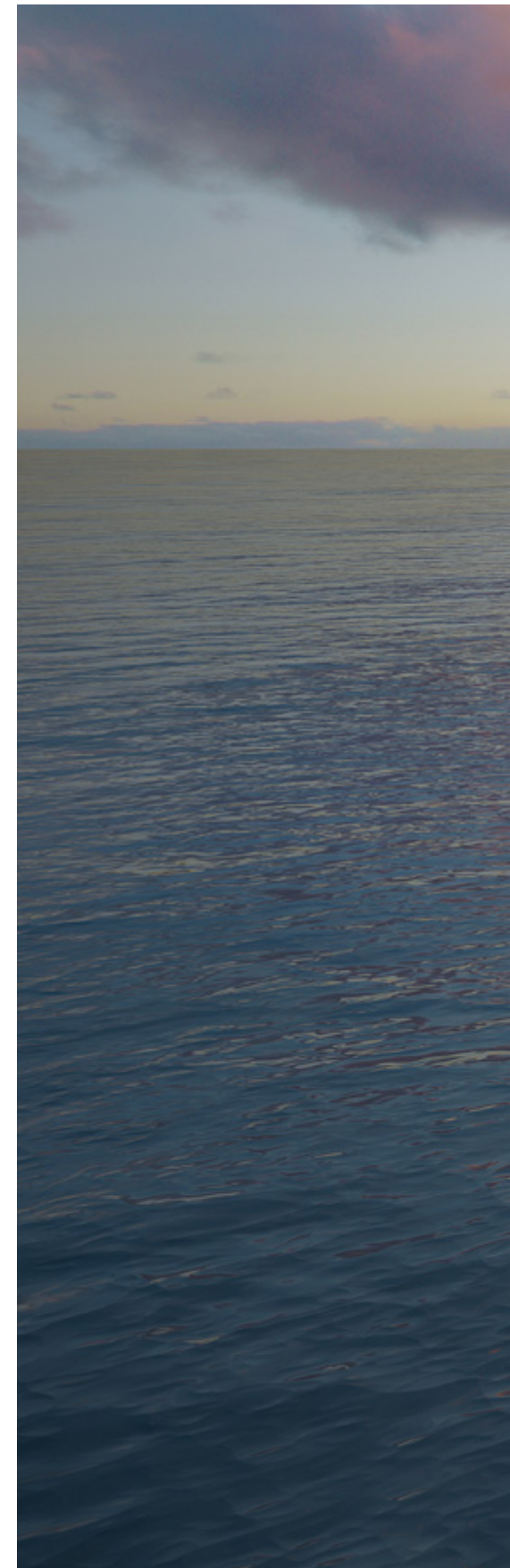
One of the most stylish interior elements is the media corner in the saloon which extraordinarily combines entertainment, board control and navigation. Angled by 90 degrees, it features two parts: Chart plotter, control panel and radio set are attached in the first, the entertainment system can be found in the other one.

Directly underneath, there is a lit table: While sailing, it can be used as chart table. At anchor, it provides another stylish stowage space.









The dinghy garage of the 675 is large enough to accommodate a 3.25 meter jet tender or a group of smaller water toys. Fully integrated hydraulic rams not only ensure effortless launch and recovery – they are almost invisible.

So when fully opened, the garage door turns into a flawless bathing platform. Take the beautifully integrated steps to enter your private sea terrace.







NEW DIMENSION

Greifswald



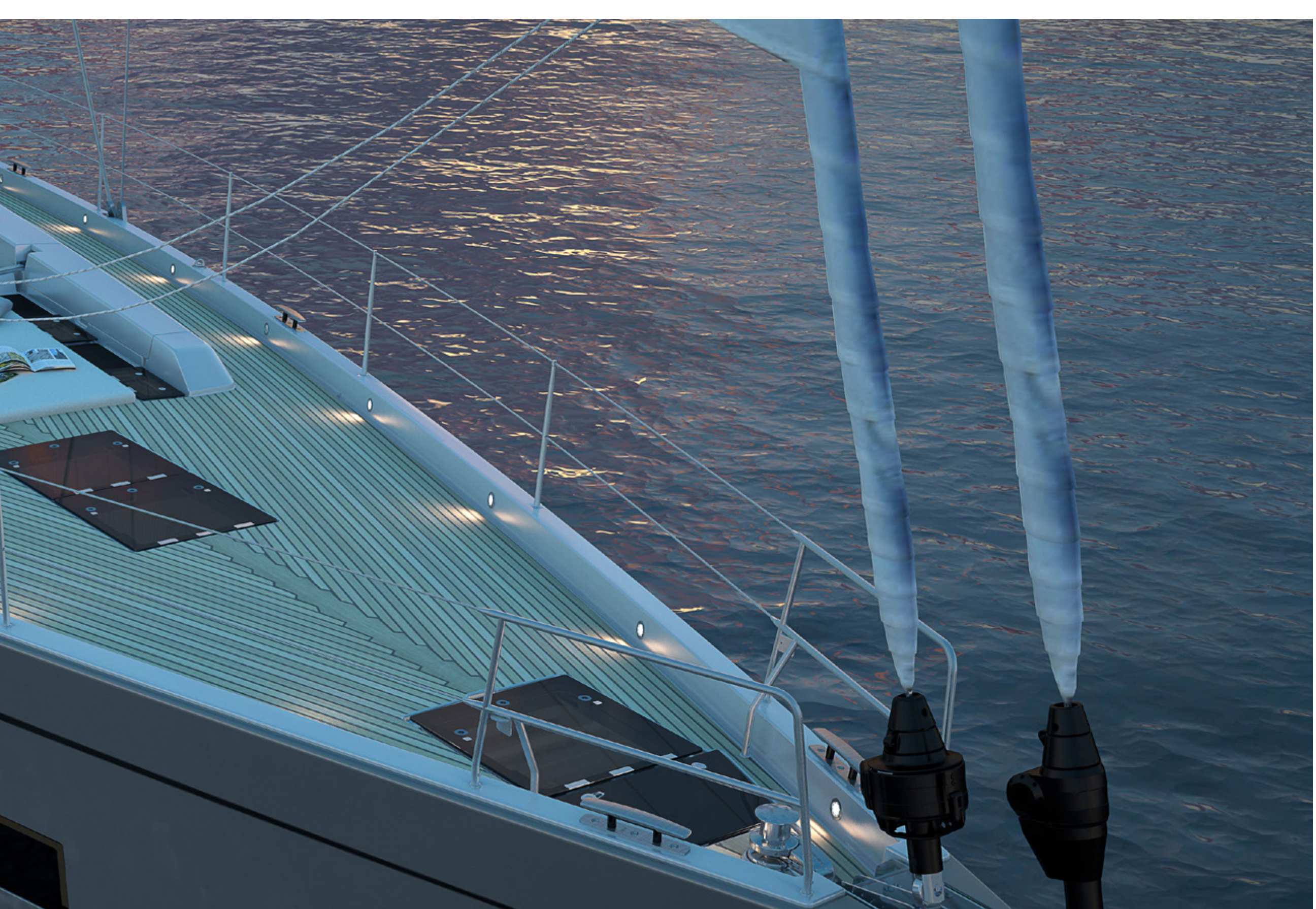


NEW

# 675

Design, performance and excellence make the 675 a supremely rewarding boat to sail. It has all the elements that yachtsmen wish to find on board of their perfect dream boat – and will delight even the most demanding of owners.







# SPECIFICATION

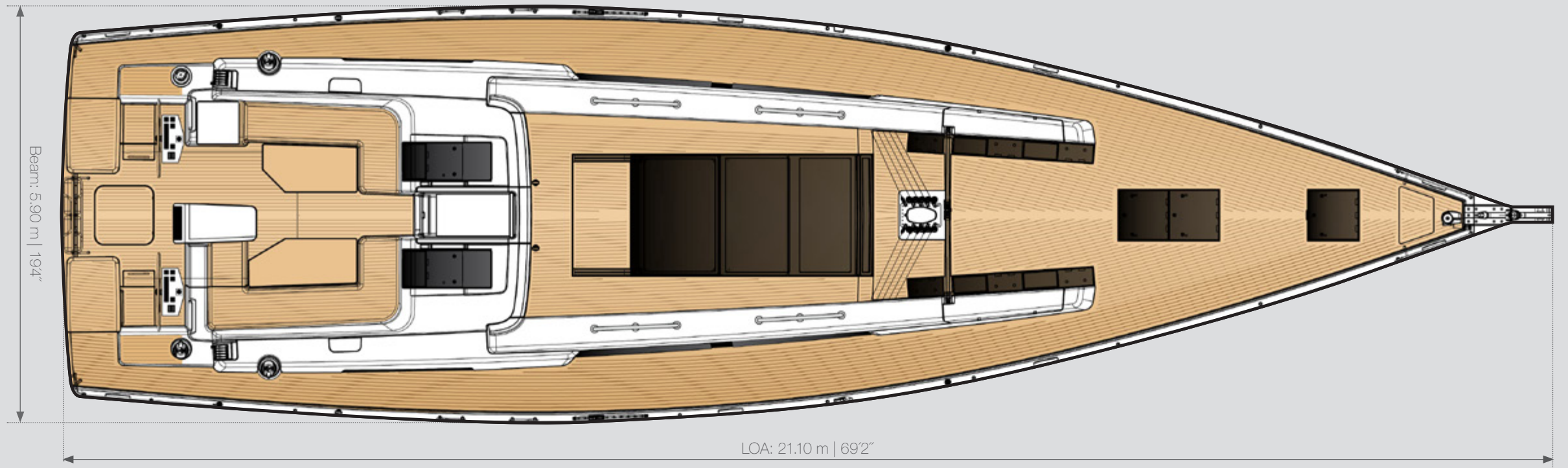
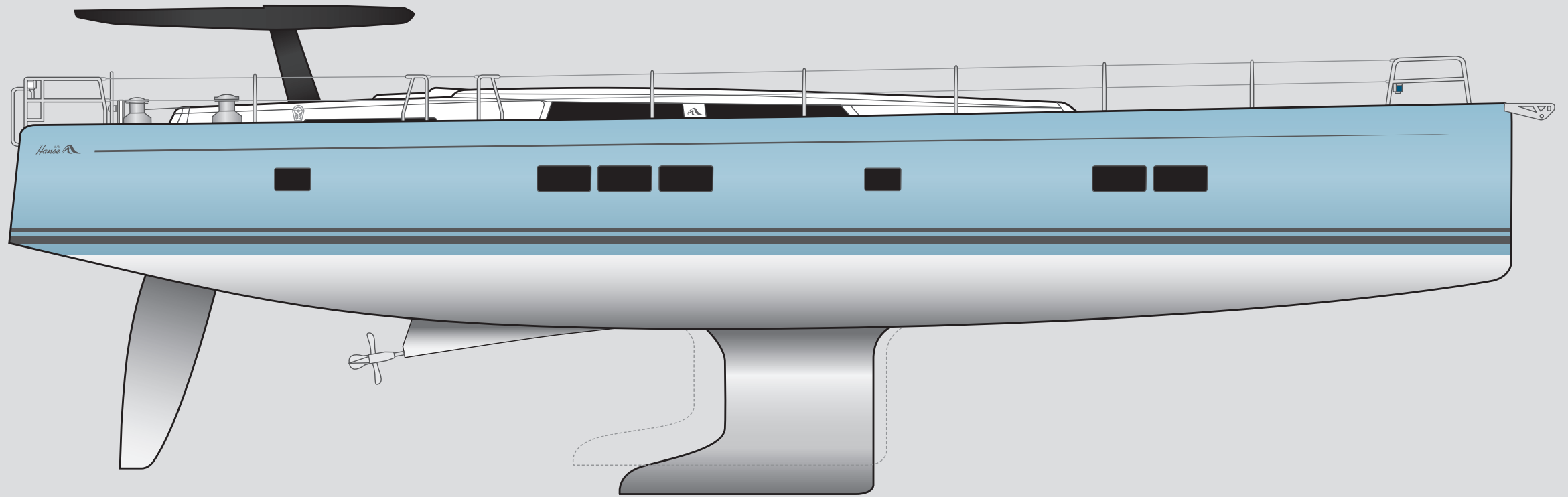
## Hanse 675

LOA	21.10 m   69'2"
Hull length	20.50 m   67'3"
LWL	19.20 m   63'0"
Beam	5.90 m   19'4"
Draft	3.10 m   10'2" (standard) 2.70 m   8'9" (option)
Displacement	approx. 34.50 t   approx. 76,059 lb (standard keel) approx. 35.50 t   approx. 77,161 lb (L shape keel)
Ballast	approx. 10,960 kg   approx. 24,162 lb (standard) approx. 12,000 kg   approx. 26,455 lb (option)
Engine	D3-150, 107 KW / 146 HP (standard) D4-225, 154 KW / 210 HP (option)
Fresh water	approx. 980 l
Fuel tank	approx. 1,100 l
Mast length above WL	approx. 31.95 m   approx. 104'8"
Total sail area	approx. 230.00 m <sup>2</sup>   approx. 2,474 sq ft
Main sail	approx. 132.00 m <sup>2</sup>   approx. 1,420 sq ft
Self-tacking jib	approx. 98.00 m <sup>2</sup>   approx. 1,054 sq ft
Genoa 140 %	approx. 165.00 m <sup>2</sup>   approx. 1,776 sq ft
Gennaker	approx. 280.00 m <sup>2</sup>   approx. 3,013 sq ft
Rig	I: 27.30 m   89'6" J: 7.75 m   26'4" P: 26.50 m   86'9" E: 9.10 m   29'8"
CE Certificate	A (ocean)
Design	judel/vrolijk & co
Interior	HanseYachts Design





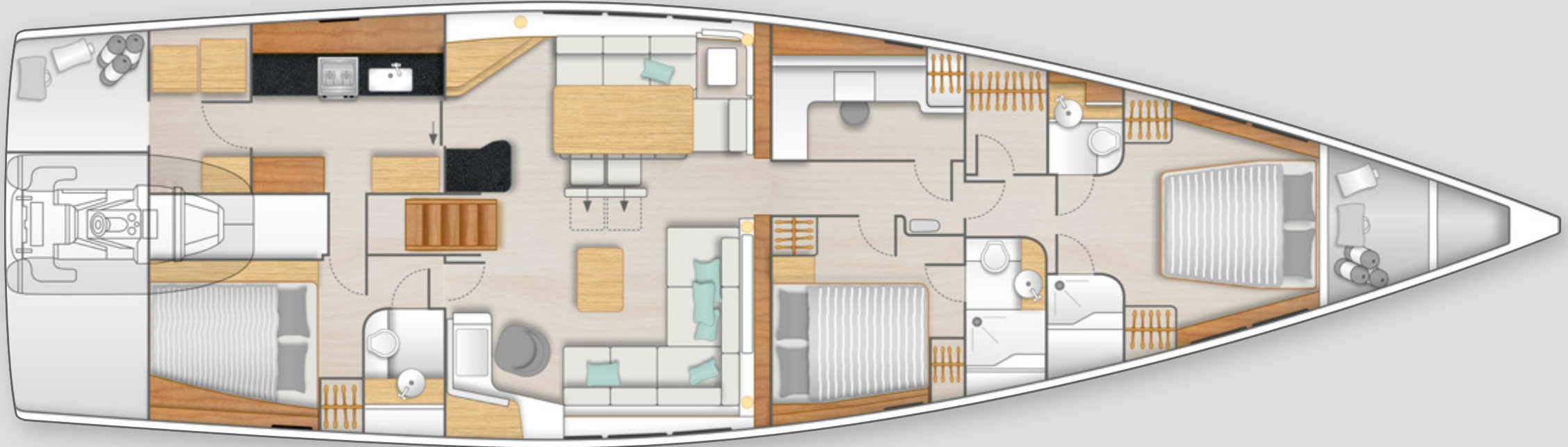
# HULL & DECK PLAN



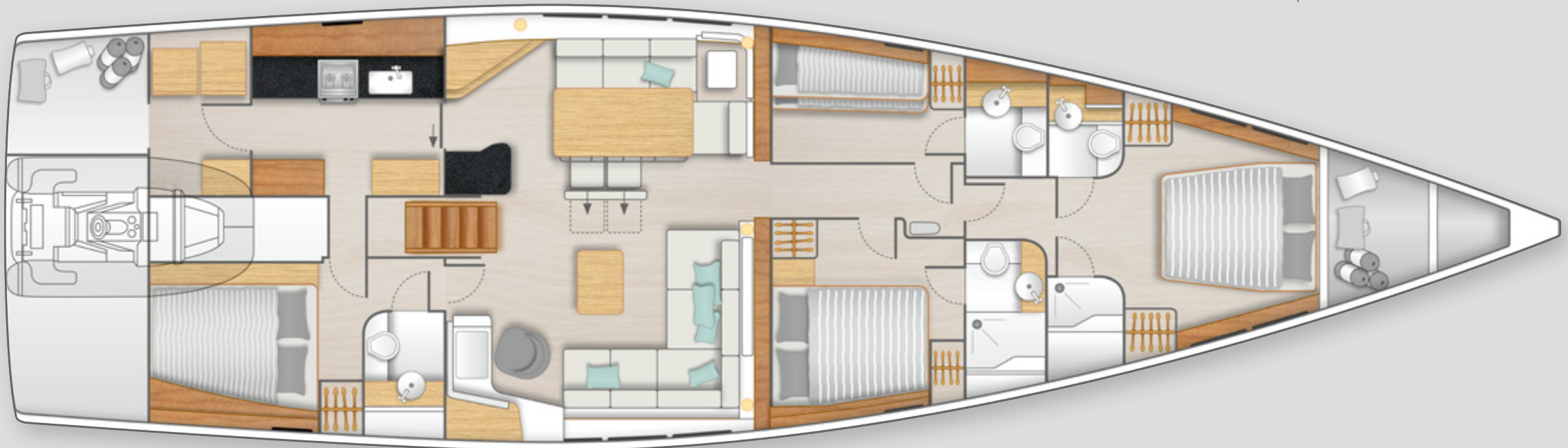


# INTERIOR LAYOUT

Standard A1 - B1 - C1 - D1



Option A1 - B2 - C1 - D1





Option A2 - B3 - C1 - D3



Option A3 - B4 - C1 - D1







Welcome  
on

FAST CRUISING / EASY SAILING / INNOVAT





board!

Over the past years HANSE has proven to be the most successful builder in semi production sailing boats over 60ft., combining german engineering with cosmopolitan design. Numerous awards underscore the innovative approach of HanseYachts when it comes to form and interior design: We make use of the potential and creativity of our staff and design partners in order to aid in actively shaping trends and developments in sailing-yacht production. As a consequence, HANSE is continually engaged in reviewing and expanding its range of products.



IVE DESIGN / INDIVIDUAL CUSTOMIZATION



 NEW

# 675

# LUXURY CUSTOMIZED TO THE MAX



Layout: www.UJFSON.de | Renderings: Björn Willer, alpha 3 | Print: Druckhaus Panzig | CIB675/D/0916