

A white Moody DS54 sailboat is shown from a side profile, sailing on a choppy sea. The boat has two large, dark sails deployed. Two people are visible on the deck. The background is a hazy, sunset or sunrise sky. The text 'DS54' is overlaid in the top right corner.

DS54

The Moody logo consists of a stylized, white, curved graphic element resembling a wave or a sail, followed by the word 'Moody' in a serif font with a registered trademark symbol.

Moody®



living on one level
& luxurious comfort



Moody DS54

easy handling &
perfect control



safety &
seaworthiness



handcrafted quality
& high-tech



The Moody deck saloon 'one level living' concept takes a unique approach to modern yacht design. Simply open the sliding doors and you'll enjoy a panoramic view from the living area and the spacious cockpit on the same level. The combination of the large cockpit with a cockpit table as standard and open afterdeck is ideal for spending time with family and friends. Welcome aboard.



living on one level
& luxurious comfort

living on one level
& luxurious comfort



Spacious stowage for dinghy or swimming equipment



Opening the bimini top creates a large space flooded with sunlight





Preciously furnished owners cabin with luxurious ambience



Roomy VIP-cabin providing much locker stowage



Shower area en-suite to both guest cabins



Galley and saloon share the stunning 360° panoramic view

living on one level
& luxurious comfort



Those who prefer a cooking area separated from the saloon choose the cabin concept with a large galley down. This version offers more working space and stowage room. Moreover, it allows for so much daylight it doesn't feel like being down in the hull. No matter which kind of galley you like better: It will be provided with every convenience you expect from a fully-equipped house kitchen. All working tops are made of CORIAN®. This premium surface combines high performance with outstanding aesthetics. It is noted for seamless appearance and stunning effects of colour and translucency.

living on one level
& luxurious comfort



The helmseat is the spot where all threads come together. From the engine to the sails, any part can be controlled by a single helmsman. For long distance sailing it is highly desirable to operate the boat from inside, which can be easily done by the autopilot system in the saloon.



easy handling
& perfect control

easy handling
& perfect control



Pushbuttons for electronic winches



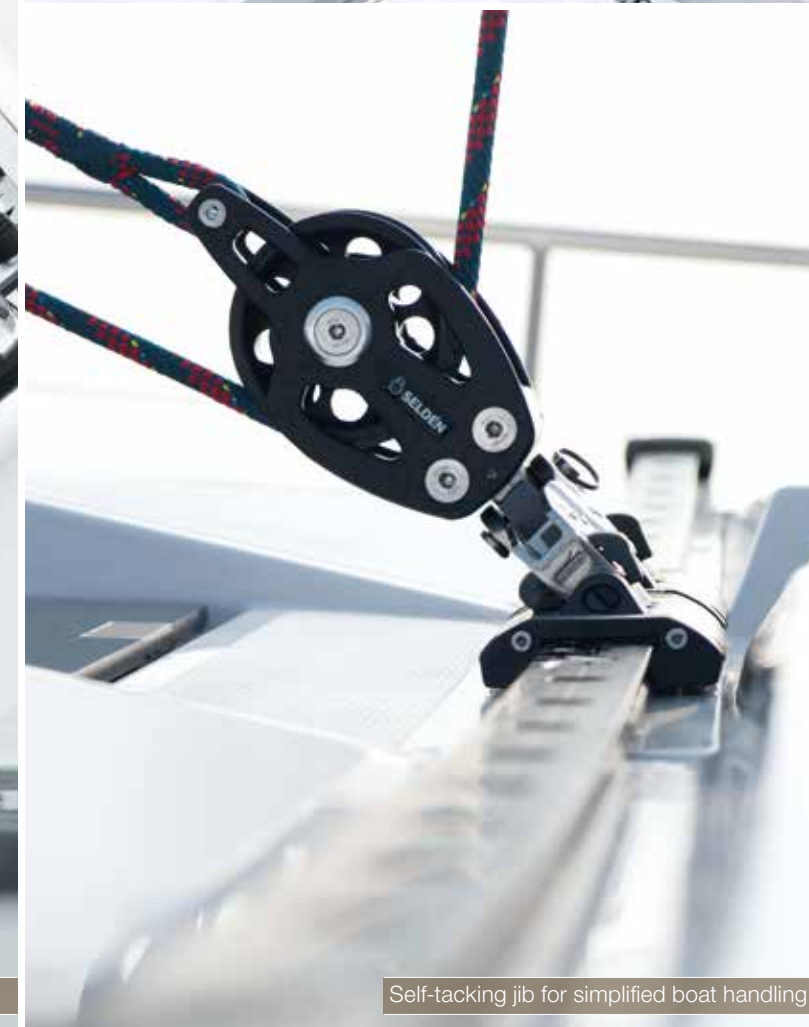
Modern autopilot allows steering from inside



Drive-by-wire technology ensures groundbreaking engine control



Furling mainsail



Self-tacking jib for simplified boat handling



Bow and sternthruster joystick

Aboard the Moody DS54, everyone enjoys the feeling of moving safely. An extra-high bulwark, holders on the saloon roof and the fixed railing give a secure passage along the side deck even if the wheather gets rough. This is particularly appreciated by little boaters like children and animals.



safety &
seaworthiness



Electronic double furlers



Multifunctional helmseat with convertible backrest



Hydraulic bathing platform and gangway

safety &
seaworthiness



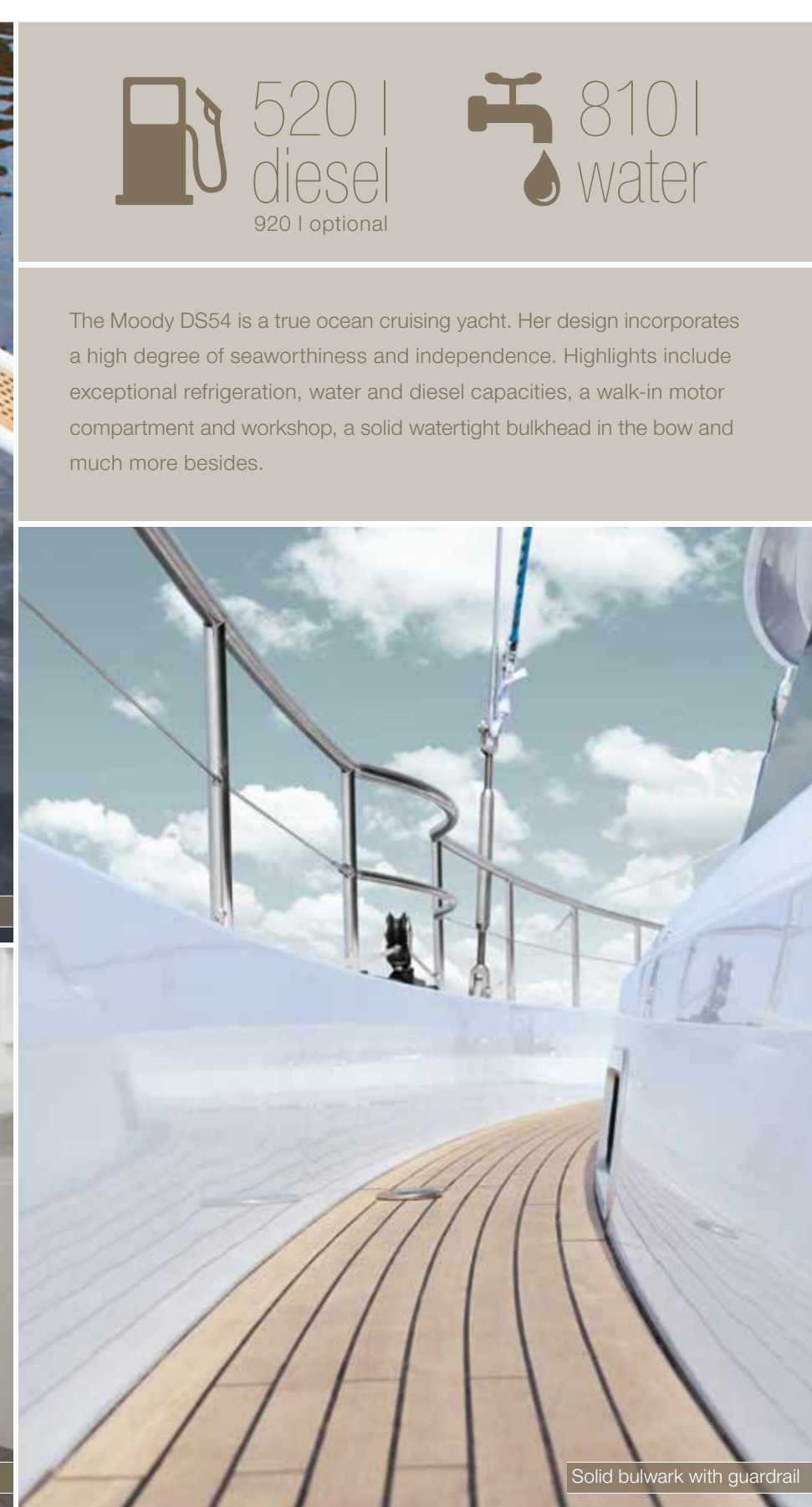
Railing with integrated ladder



Integrated windlass



Easily accessible storage locker



Solid bulwark with guardrail

520 |
diesel
920 | optional

810 |
water

The Moody DS54 is a true ocean cruising yacht. Her design incorporates a high degree of seaworthiness and independence. Highlights include exceptional refrigeration, water and diesel capacities, a walk-in motor compartment and workshop, a solid watertight bulkhead in the bow and much more besides.

All elements of the Moody DS54 are elaborately manufactured and most precisely fitted wherever you look at. Electronical components, mechanical parts, furniture: Each detail meets the highest standards and serves the intention to make your cruise as comfortable as possibly can be – under any conditions.



handcrafted quality
& high-tech

handcrafted quality
& high-tech



Classically arranged teak



Flush metal pushlock

Experience a fine and perfect interior with solid woods plus a classic teak deck where handcrafted solidity meets modern design. The Moody DS54 benefits from an extra-safe construction with strong bulkheads sturdily connected with hand-laid laminates to the hull and deck.

tradition meets
modernity



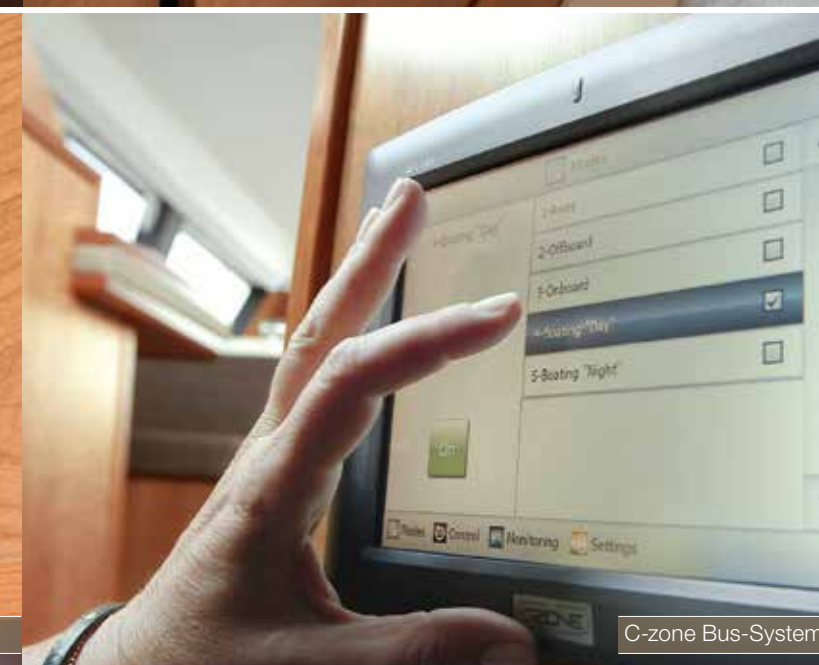
Solid wooden fiddles with textile inlay



Finest furnishing and latest TV-technology for the guests



Full control at navigation area



C-zone Bus-System

By the state-of-the-art BUS-System, the skipper adjusts major technical functions to particular boating situations such as sailing away, beeing offboard or boating at night. This is easily done by using a single control panel in the hallway.

electronics
meet design



Fusion high-performance entertainment system



hull & waterline

hull — gelcoat colours

standard — Off White

option — Light Grey

option — Sand Grey

option — Caribbean Grey

option — Azure Grey

waterline — gelcoat colours

standard — Moody Grey

option — Off White

option — Caribbean Grey

option — Azure Grey

option — Lago Grey

option — Classic Dark Blue

option hull & waterline — painted

The hull and waterline can be painted in almost every colour according to the Alexseal Yacht Coating Selection. Please ask your dealer.

Cloud White

Whisper Grey

Dark Grey

Flag Blue

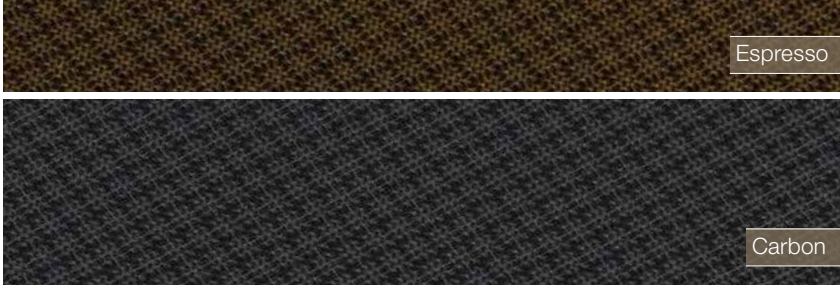
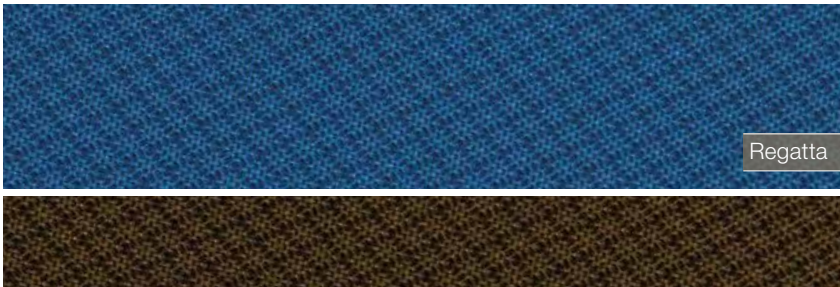
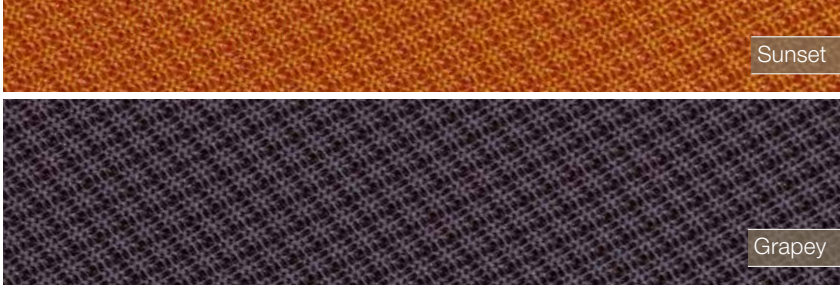
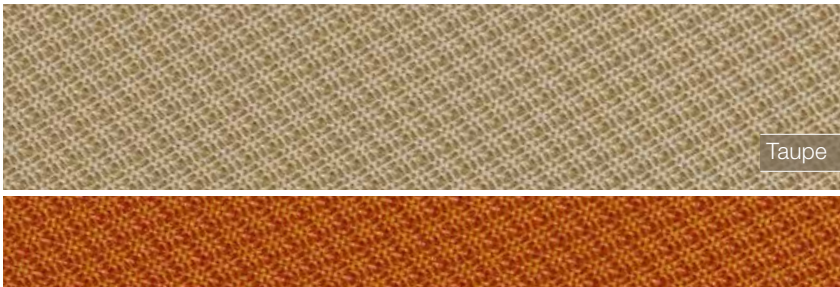
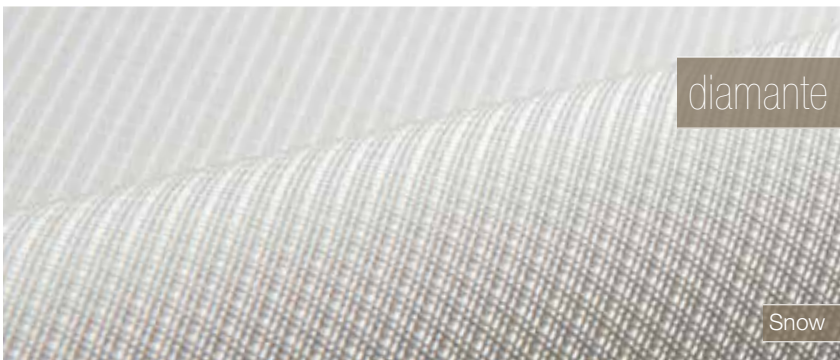
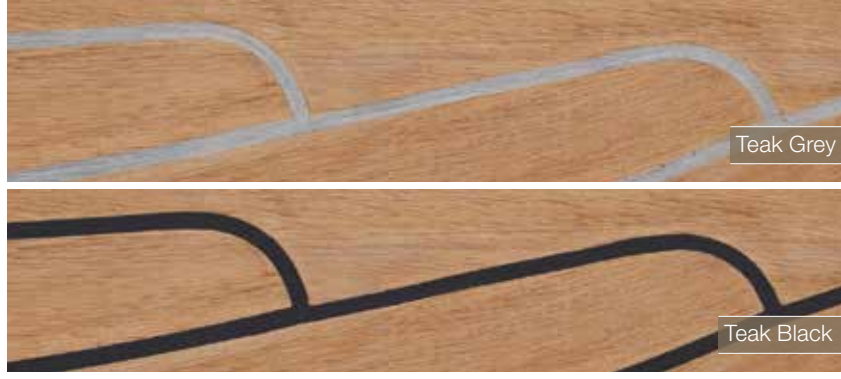
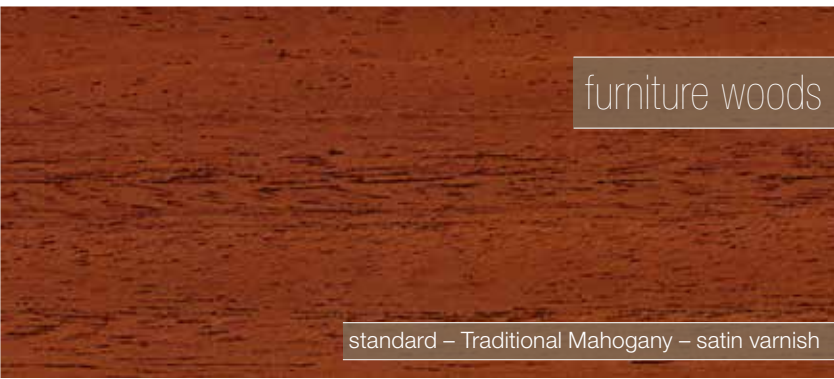
Sunfast Red

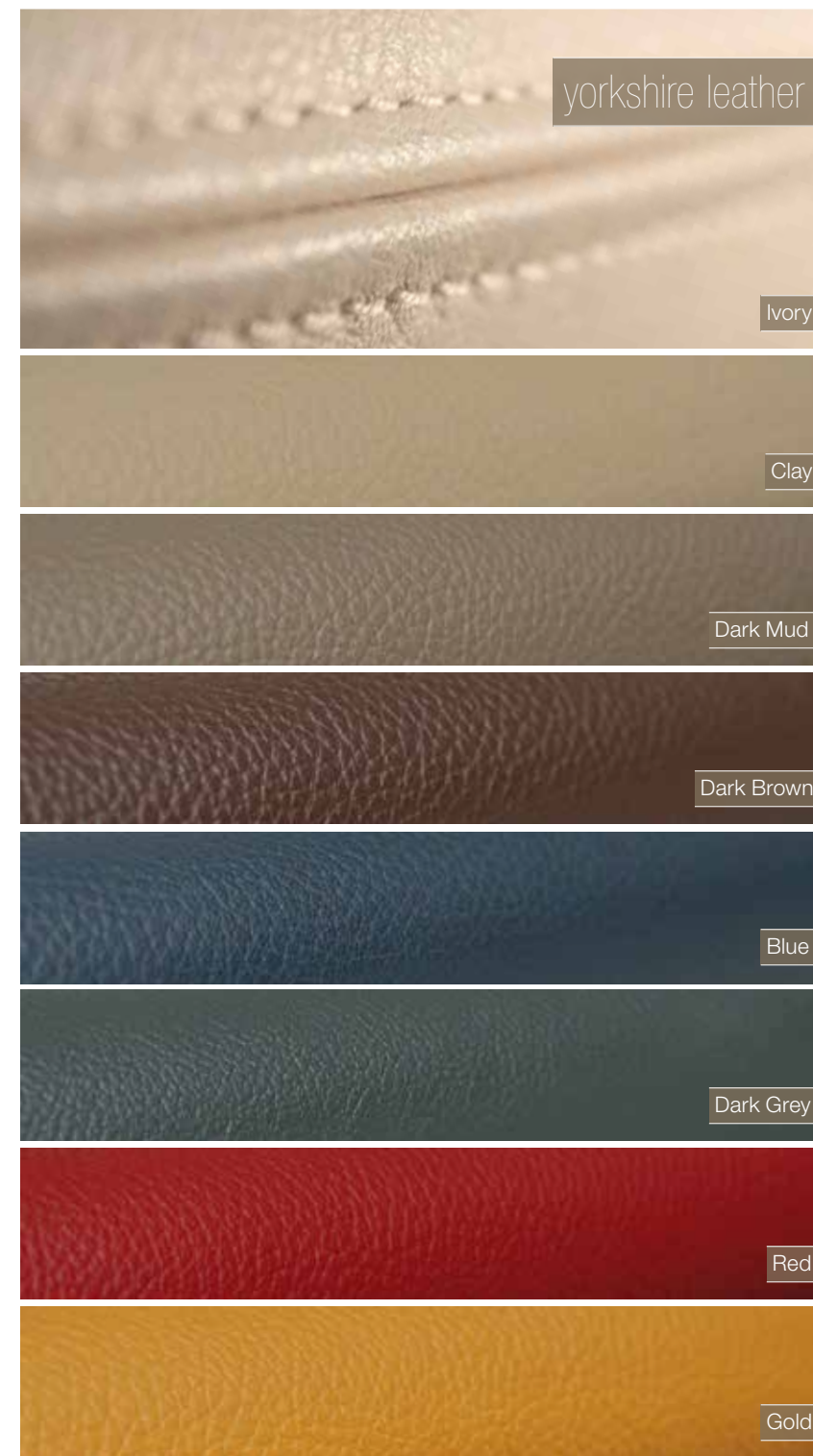
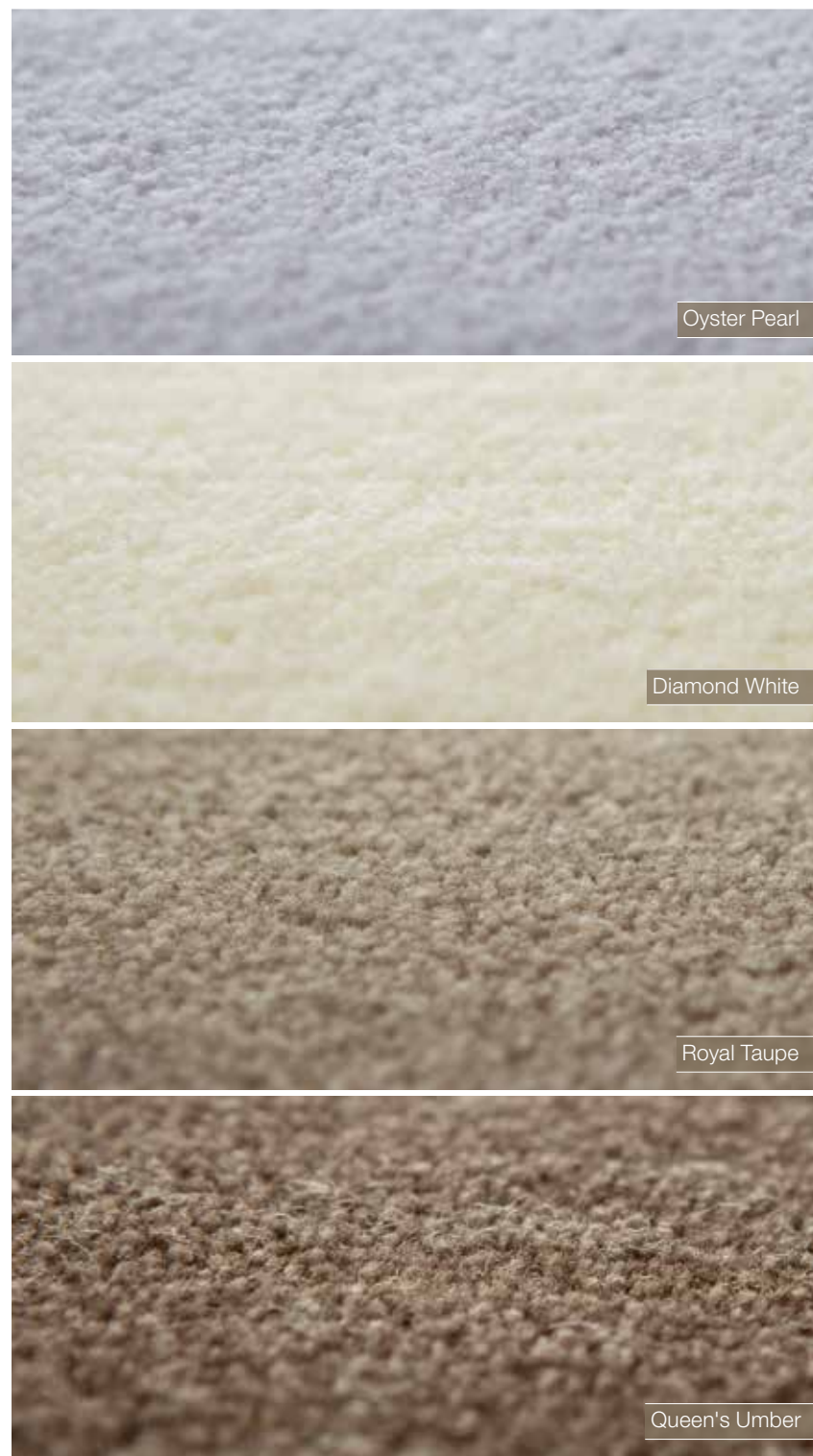
Teal

Moon Dust



colours & materials
make it yours





optional worktops galley

optional floor carpets

optional curtains

optional saloon, sofa & navigators seat upholstery

options



Second forestay with electrical genoa furler



Sunbed on foredeck



Fischer Panda generator with Volvo Penta engine



Hydraulically retractable gangway



Electrically lowerable cockpit table



Staying cool below deck in any environmental climate requires a high-quality air conditioning. At your request, we will install a system that offers precise temperature control, long service life and effective energy conservation.

air condition



Dishwasher



Washing machine and dryer



Extra fridge for the owner's favorite bottles

as you like it...

Your individual expectations about the Moody DS54 go beyond what is standard? We will be glad to customize your boat according to your demands. There is plenty of special technical equipment that can be installed. And when it comes to the choice of upholstery and flooring, the sky is the limit.

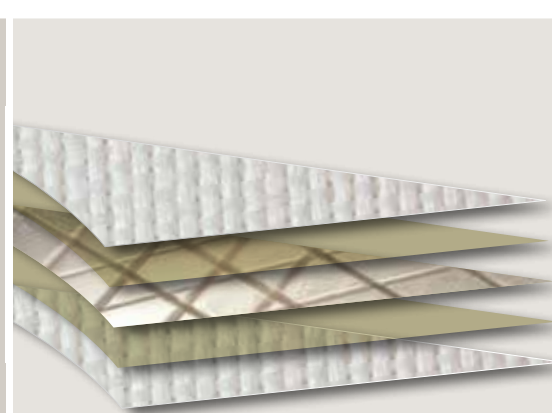


Taffeta: 1,7 oz
Double Layer Film
Grid Fabric: 6 ends 3000 P/5 picks 500 P
Double Layer Film
Taffeta: 2,0 oz




ELVSTRØM FCL 5 layer
performance trioptimal sails

- increased stability for high performance
- high durability for ambitious cruising
- exclusive design by Jesper Bank for Moody





Grey Taffeta: 1,7 oz
Double Layer Film
Fase: Aramid/Technora
Double Layer Film
Grey Taffeta: 2,0 oz



ELVSTRØM high-end HPM
membrane sails

- high form stability due to optimal membrane
- minimal stretch due to high-strength Technora fibres
- high-mechanical strength using Taffeta
- extremely low weight per m²




ELVSTRØM high-end-performance sails



TV packages

FUSION MS-AV 750 Multimedia radio, CD/DVD Player, VHF, AUX, USB incl. colour display

4 High-end 2-way speakers integrated in headliner

2 High-end 2-way speakers in cockpit

FUSION MS-UNIDOCK docking station for iPod/iPhone, USB, Android

FUSION MS-NRX200 remote control in cockpit

Antenna splitter for VHF, FM, and AIS

WLAN access point

entertainment package plus



navigation packages

2 Raymarine i70 multifunction displays, one at each helm position, incl. windtransducer

2 Raymarine E95 GPS chartplotter, one at each helm position

Autopilot, Raymarine evolution

Raymarine 260 VHF incl. 2nd wireless handset

AIS Class B transponder

NMEA engine information interface for chartplotter

Antenna splitter for VHF, FM, and AIS

Raymarine basic

4 Raymarine i70 multifunction displays, 2 at each helm position, incl. windtransducer

2 Raymarine GS125 high-end glass bridge GPS chartplotter, one at each helm position

Autopilot, Raymarine evolution

Raymarine 260 VHF incl. 2nd wireless handset

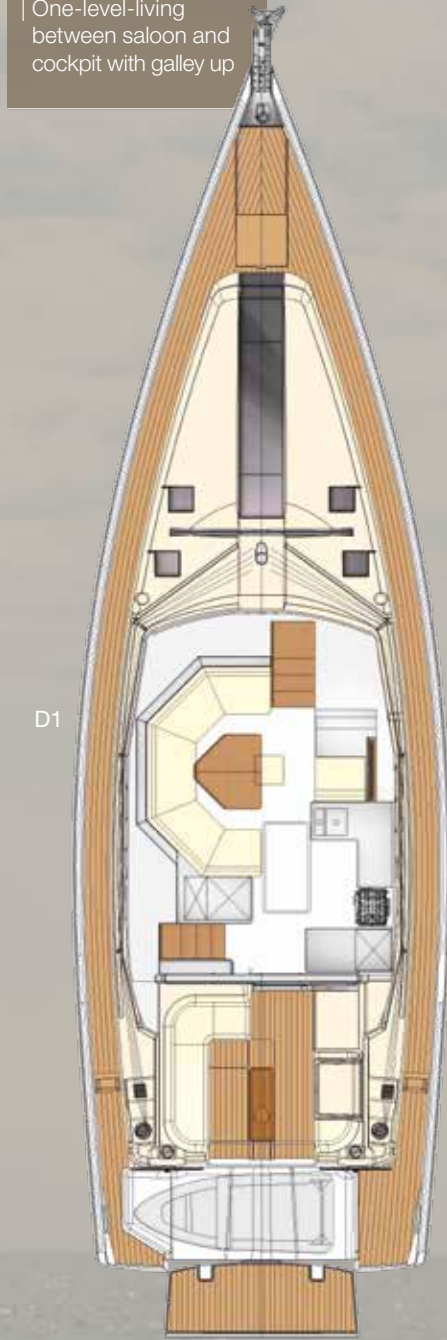
AIS Class B transponder

NMEA engine information interface for chartplotter

Antenna splitter for VHF, FM, and AIS

Raymarine plus upgrade

standard
| One-level-living
between saloon and
cockpit with galley up



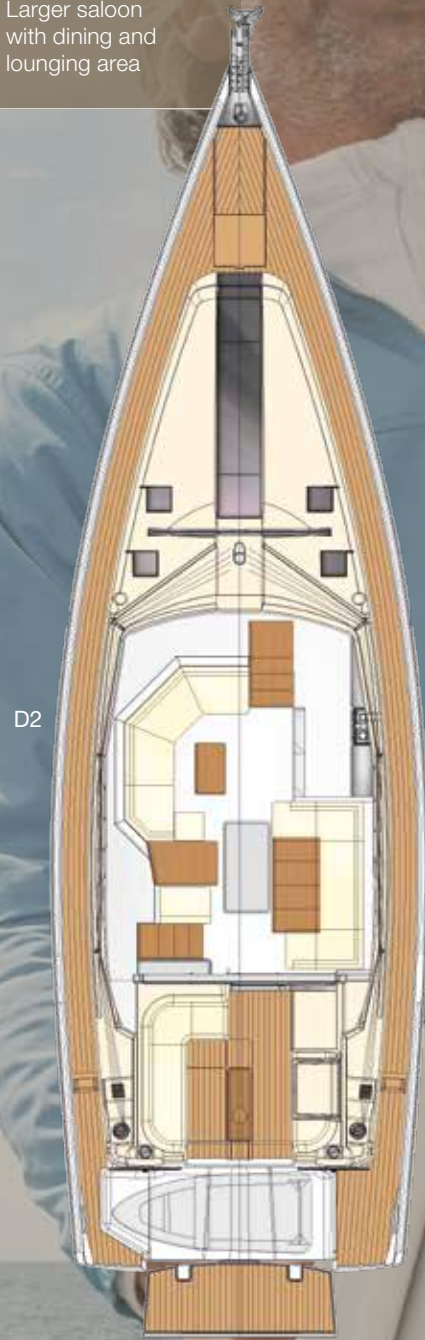
standard
| Large owners cabin
with en-suite shower



option
| Modified layout
of VIP cabin



option
| Larger saloon
with dining and
lounging area



option
| Large galley down



option
| Large galley down
| Modified layout
of VIP cabin



cabin concept & specifications

LOA	17.10 m 56'1"
LWL	15.55 m 51'0"
Beam	5.20 m 17'
Draft	2.65 m 8'5" (standard) 2.25 m 7'4" (option)
Displacement	approx. 24.5 t approx. 53,550 lb
Ballast	approx. 7.0 t approx. 15,300 lb
Engine	Volvo D3-150 110 kW / 150 HP
Fresh water	approx. 810 l 214 US gal
Fuel tank	approx. 520 l 138 US gal
CE Certificate	A (ocean)
Mast length above WL	25.30 m 83'
Main	approx. 81.50 m² 878 sq ft
Jib	approx. 65.00 m² 700 sq ft
Genoa	approx. 79.00 m² 851 sq ft
Genaker	approx. 200.00 m² 2,154 sq ft
Total sail area	approx. 160.50 m² 1,739 sq ft
Rig	I 21.40 m 70'22" J 6.40 m 20'96" P 20.70 m 67'90" E 7.10 m 23'29"
Design	Dixon Yacht Design





Moody
Ladebower Chaussee 11
D-17493 Greifswald
www.moodyboats.com

Woy Woy
Sydney



Moody®