

**FJORD**   
*BE UNIQUE*



**52**  
*open*



*52*  
*open*

*BE* *UNIQUE*  
*BIG FUN. FULL SPEED. HUGE SPACE.*



Imagine the vigorous signature design of FJORD in a size that takes liveability on board to another level.

Fancy a FJORD with unprecedented luxury, power and space for laid-back days on the water? The boat you have in mind is the FJORD 52 open!



*PASSIONATE FOR*  
***POWER***

*38 KN*  
max. speed

*1440 HP*  
max. output

*18 CYLINDERS*  
in three engines







---

The FJORD 52 open is the very definition of the word "breathtaking". It is the ultimate powerboat and makes no secret of it – time to outrun the ordinary!





*... AND OFF WE GO!*

Two Volvo Penta IPS700 engines lift the bow easily from the water. If you like to push exhilaration to the utmost intensity, take the 1,440-horsepower version with three IPS650 engines, boosting the speed to 38 knots.







## *HELMSMAN'S HEAVEN*

The exceptional dashboard design puts the helm station and the driver at the centre of it all. Moreover, it makes your FJORD a pleasure to manoeuvre, and the precise joystick control ensures you can dock its 52 feet with the greatest of ease.







Discover a new dimension sharing your vibrant lifestyle with family and friends. Fine materials touch everybody's senses, and every amenity your guests could wish for is always within reach.

THE WHOLE RANGE OF

---

*PLEASURES*







*PUT MORE LIFE  
INTO LIVING*

Nothing illustrates the enormous amount of space on the FJORD 52 open better than the forward and cockpit sun loungers. The aft sunbathing area can be even further enlarged thanks to the lowerable cockpit tables.







*HAVE A GREAT TIME  
ALL DAY LONG*





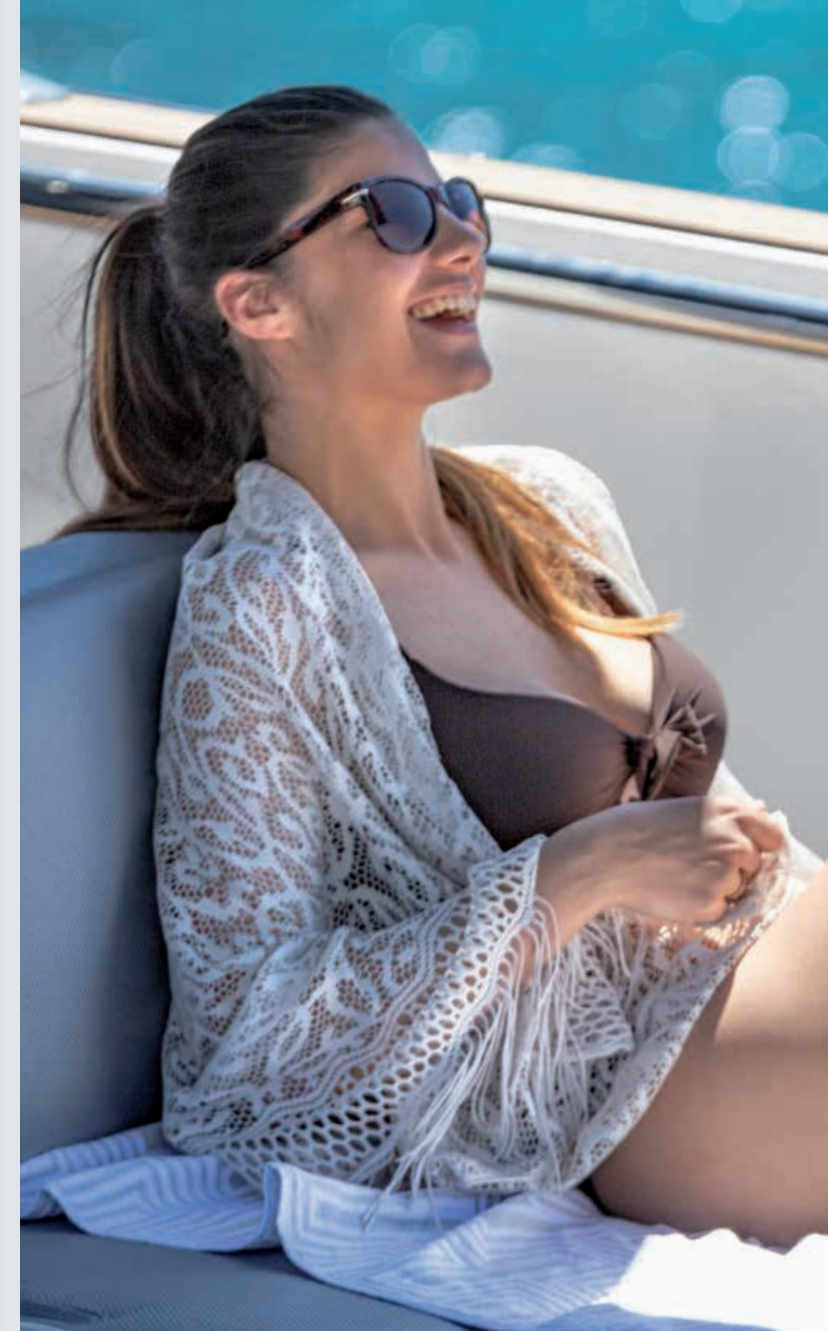
*FORM FOLLOWS*  
***FASCINATION***

---

Seductive. Glamorous. Extravagant. The FJORD 52 open is a bold statement of independence and a symbol of success wherever it appears. Designer Patrick Banfield has masterfully transposed the iconic FJORD hull shape onto the full 52 feet of this yacht. Visual details are reduced to the essential, unmistakably formed and beyond the mainstream. When first impressions count, this inimitable powerboat always delivers.







## *THE ONE AND ONLY T-TOP*

---

The legendary T-Top seems to float above the boat. While it gives the FJORD 52 open its all-round open character, it also casts pleasing shade over the central deck area.





**FJORD**   
BE UNIQUE





## EXPRESSIVE EXTERIOR

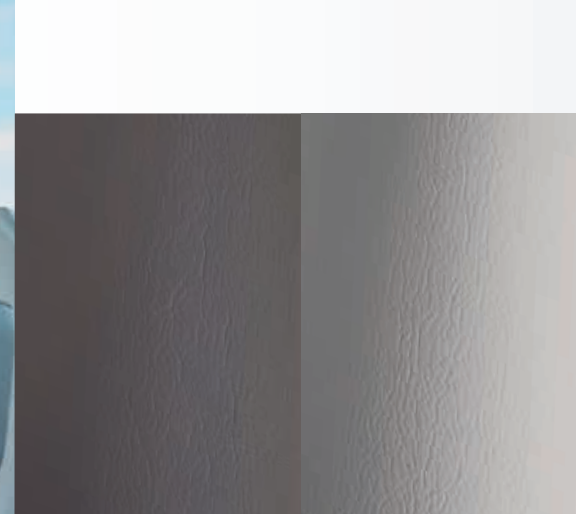
Among the many individual statements you make with your FJORD, the hull paint stands out most. That's why the entire range of colours is at your disposal, from prestigious to very extravagant hues. Based on your requirements, FJORD can also develop special coating effects or multicoloured hull designs.



The hull can be painted in almost any colour.



helm seat upholstery – synthetic & ultraleather



dark grey

light grey



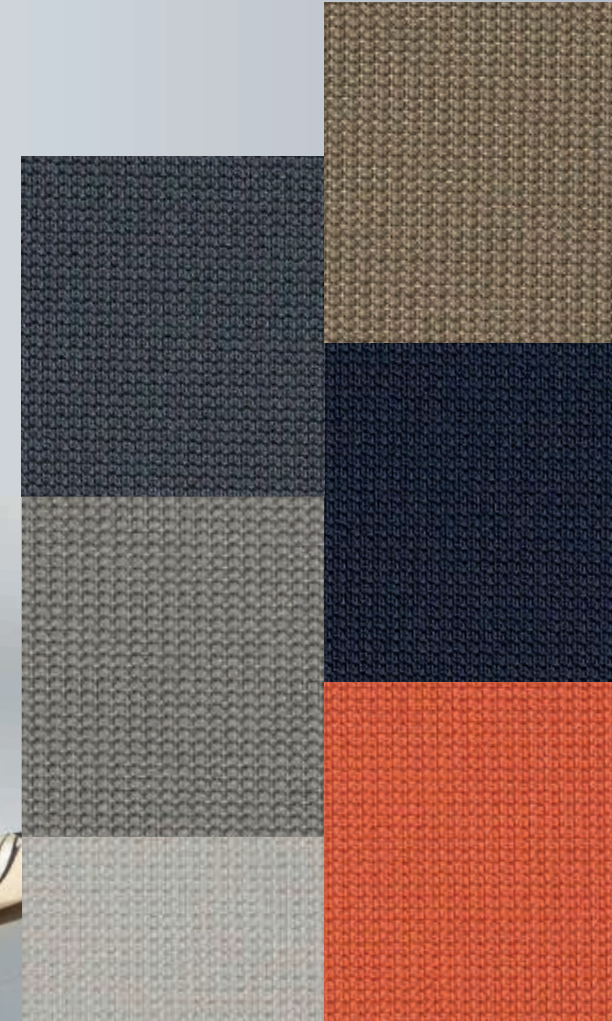
red

mandarin orange



cream

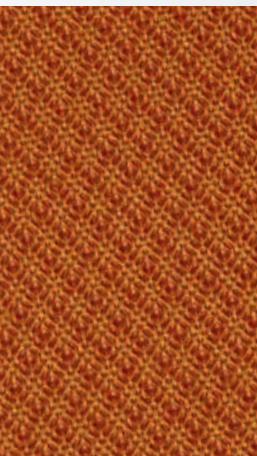
The materials depicted are a tiny sample of what is available. Your FJORD dealer will show you the full range.



rattan  
gulf stream  
lobster



cubic  
cayenne



cockpit bench & sunbed upholstery

matrix  
shore grey  
harbour seal  
gull wing

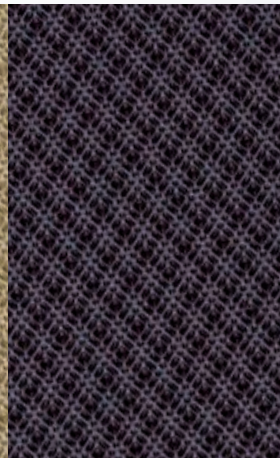
marine salt



olive grove



aubergine







When the day is over, the FJORD 52 open continues to excite. Two impeccably styled double cabins offer the perfect retreat to relax and recharge.

The interior is finished with such fine materials that you can't help but run your hands over them. Headroom, berth size and storage go beyond your previous ideas of a powerboat. Get below deck and feel the atmosphere of privacy, space, purism and elegance!

*SURROUNDED BY* 

---

*STYLE*







---

Modern, elegantly finished woods, mirrored closet doors and select wall textiles combine to position the FJORD 52 open ahead of future trends. In the owner's bathroom, elaborately crafted designer fittings perfectly complement an innovative mix of materials.





noce nero

pale acacia

floor woods



carpets

sugar  
tobacco  
coffee

## INDIVIDUALISED INTERIOR

The cabins on a FJORD are where the owner expresses all their personality – and therefore unique to each yacht. Handpicked from top-class manufacturers, the choice of fabrics, furniture woods, floorings and leathers spans an enormous range of styles and colours.



furniture wood

signal white high gloss finish  
lisboa chestnut  
milano oak



warm mahogany  
atlanta walnut



upholstery –  
scoop leather

ivory  
clay  
mud  
amber  
basalt

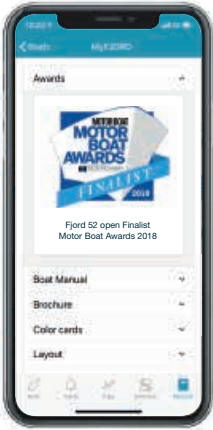




# MY FJORD SAFETY CLOUD

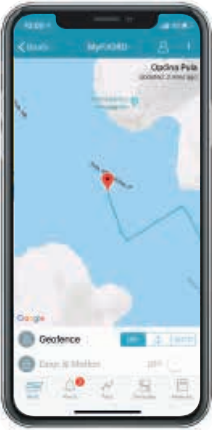
Everyone is talking about the digital future. But FJORD is implementing it – with the first cloud-based telematics system for serial production motor yachts. You can access your boat's technical data and functions live via the mobile app or via the owner's area at [www.fjordboats.com](http://www.fjordboats.com)

Intelligent functions such as BoatMonitoring, eLogbook and eServicebook enable you to keep an automatic logbook, stay on top of all servicing dates and monitor your yacht seamlessly.



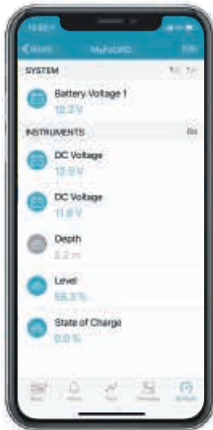
## MANUALS

All manuals and instructions within one app.



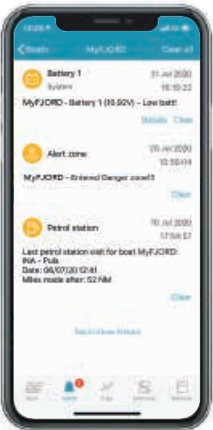
## POSITION

Track your position in real time.



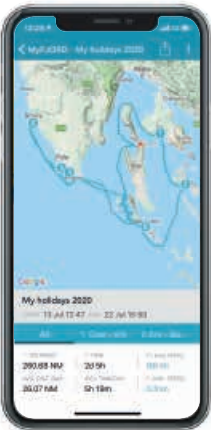
## SENSORS

Monitor your charge levels and devices.



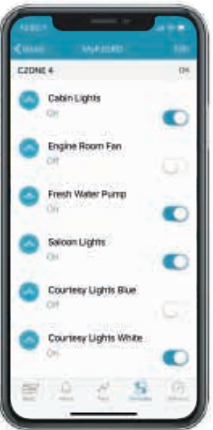
## ALARMS

Push notifications on current events.



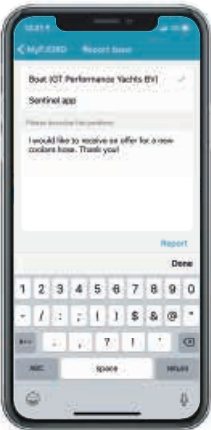
## TRIP LOG

Share your cruises and track data with friends.



## CONTROL

Operate your electronic devices by remote control.



## LIVE REPORT

Direct contact to your dealer for quick help.

- FRIDGE**  
Turn on/off remotely
- LIGHTS**  
Turn on/off
- HATCH/DOOR SENSOR**  
Monitor unauthorised access
- SHORE POWER**  
Monitor connection
- ENGINE**  
Monitor activity
- MOTION SENSOR**  
Collision and grounding detection
- FUEL TANK**  
Monitor level
- WATER TANK**  
Monitor level
- BATTERY BANK**  
Monitor level
- GPS, WIND AND SPEED DATA**
- ANCHOR WINCH**  
Monitor activity
- BOW THRUSTER**  
Monitor activity
- BILGE PUMP**  
Monitor activity

\*Control and sensors depend on the configuration of your FJORD.



LAYOUT OF *YOUR CHOICE*



MAIN DECK  
standard



MAIN DECK  
option



CABIN CONCEPT  
standard



CABIN CONCEPT  
option



CABIN CONCEPT  
engine option



*TECHNICAL DETAILS*

LOA	16.36 m	53' 8"
Hull length	14.20 m	46' 7"
Beam	4.79 m	15' 9"
Draught	1.37 m	4' 6"
Fresh water capacity	390 l	86 UK gal
Fuel capacity	2,080 l	457 UK gal
Displacement	17.8 t	17,52 UK t
CE Category	B	B
Max. persons	18	18
Engines Standard	2x Volvo Penta IPS700 approx. 34 knots*	
Engines Option	2x Volvo Penta IPS800 approx. 36 knots*	
Engines Option	3x Volvo Penta IPS650 approx. 38 knots*	
Design	Allseas Design & FJORD	

\*All performance figures are given in good faith and are intended as an indication. These figures cannot be guaranteed as the top speed in particular is affected by the cleanliness of the hull, conditions of the propellers, weight carried and air/sea temperature. FJORD reserves the right to change specifications in line with the company policy of improvement through research and development. Errors and omissions expected. Please check with your dealer for a full list of inclusions. Above specifications are non-contractual. Valid from 01.01.2020



*52*  
*open*



*FOREVER*  
*THE ORIGINAL*

**FJORD** 





*52 open*



*44 open*



*41 open*



*38 open*



*44 coupé*



*38 xpress*

FJORD / Ladebower Chaussee 11 / 17493 Greifswald

*This brochure is not contractual. The yachts depicted partly comprise special equipment not included in the standard scope of supply. Illustrations may not correspond with current versions. Subject to alterations in design and equipment without notice and errors excepted. Printing: Druckhaus Panzig. Design: smz GmbH. Photos: Nico Krauss.*

CIBF52o/A/GB0420